

## Rotaia per cancelli da avvitare - Profilo V

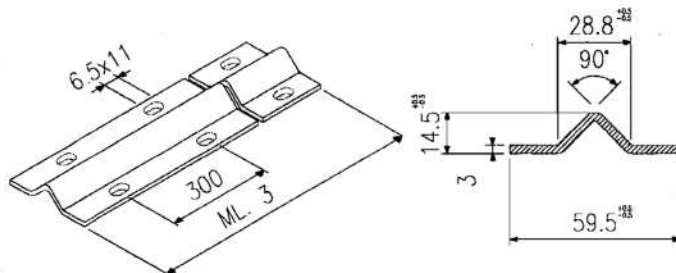
Art. 371

acciaio zincato  
acier galvanizé  
galvanized steel  
hierro cingado

Rail à visser pour portails - profil V  
Track for wheels to be screwed - V profile  
Rail por cancela por atornillar - perfil V



Art.	371
Barre Barres Pieces Barras	1 mt.
CODICE ART.	371
N° Pcs	1
Kg.	7,000



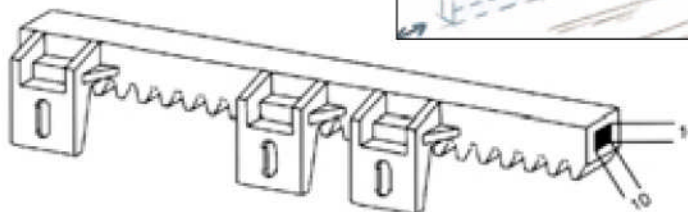
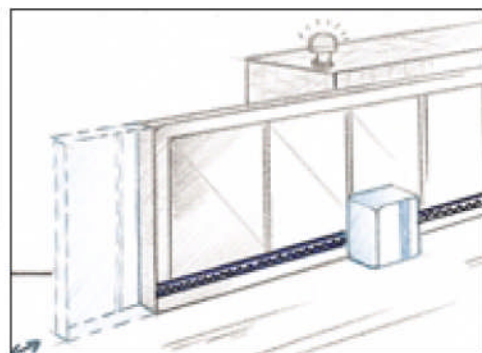
Art. 468

## Cremagliera in plastica per cancelli scorrevoli

Cremaillere en plastique pour portails coulissants  
Plastic rack for sliding gates  
Cremallera en plastico para correderas



Art.	468
Barre Barres Pieces Barras	1 mt.
CODICE ART.	468
N° Pcs	1
Kg.	1,300

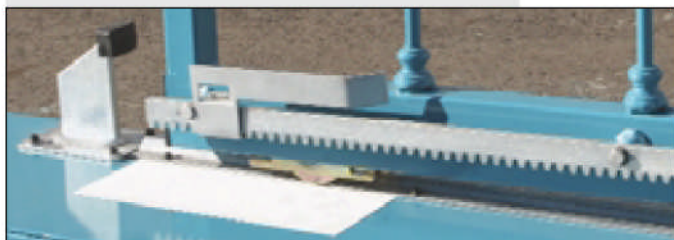


anima acciaio  
interior acier  
steel inside  
interior en acero

Art. 473-473/A

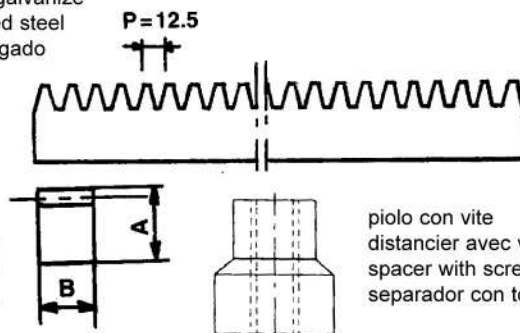
## Cremagliera in acciaio per cancelli scorrevoli

Cremaillere en acier galvanizé pour portails coulissants  
Rack galvanized steel for sliding gates  
Cremallera en acero cingado para correderas



Sezione: A x B  $\nabla$  22 x 22 barre mt. 1  
A x B  $\nabla$  30 x 12 barre mt. 1 con asole

Art. 473  
in acciaio zincato  
en acier galvanizé  
galvanized steel  
acero cingado



piolo con vite  
distancier avec vis  
spacer with screw  
separador con tornillo

Art. 473/A  
piolo con vite a richiesta  
distancier avec vis sur demande  
spacer with screw on request  
separador con tornillo por requesta

Art.	473	
AxB mm	22x22	30x12
Barre mt. Barres Pieces Barras	1 mt.	1 mt.
CODICE ART.	47302222Z	47303012Z
N° Pcs	1	1
Kg.	3,000	2,500

Art.	473/A
CODICE ART.	473A
N° Pcs	1
Kg.	

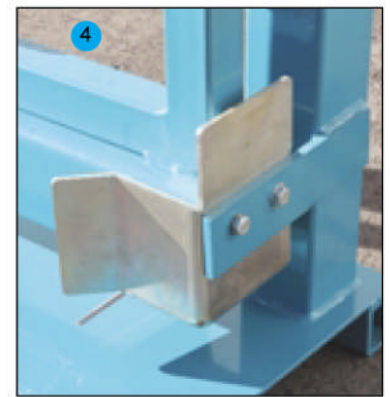
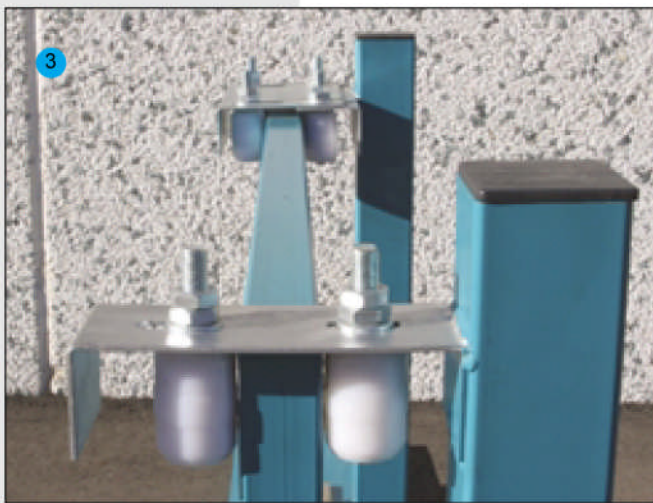
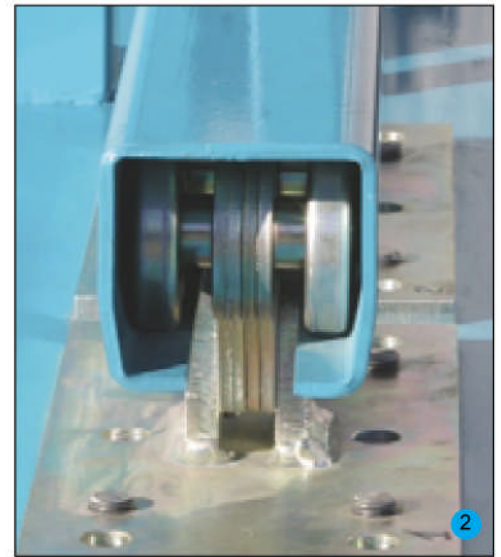
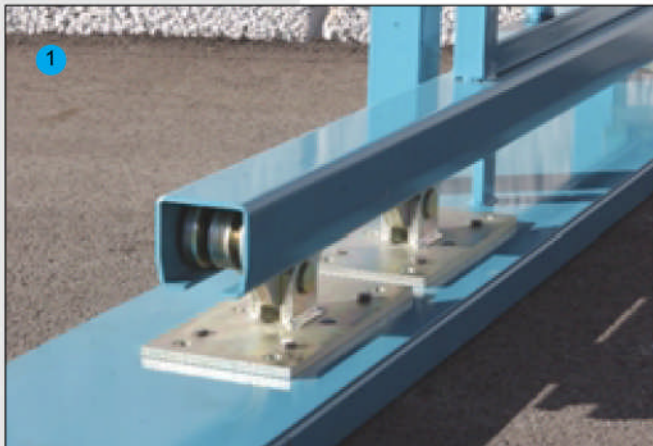
1-2: autoportanti  
(vedi pagg. 109  
Art. 2100)

3: piastre di guida  
(vedi pagg. 93  
Art. 465)

4: incontro  
(vedi pagg. 109  
Art. 2120)

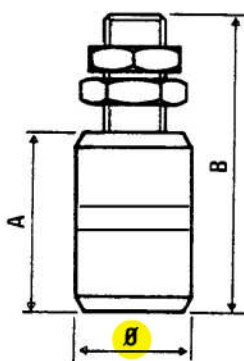
5: serratura  
(vedi pagg. 99  
Art. 2570)

6: cardini  
(vedi pagg. 62  
Art. 438/439)



### Rulli di guida in nylon per cancelli scorrevoli

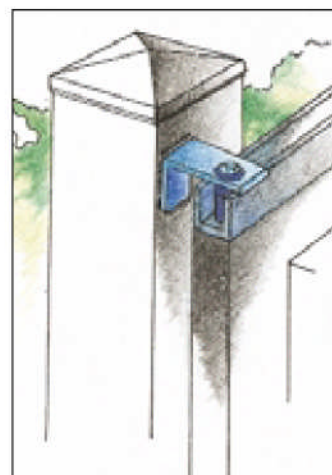
#### Art. 460-960



Rouleaux guide en nylon pour portail coulissants  
Nylon roller guide for sliding gates  
Rodillos guías en nylon

**Art. 460**  
in ferro zincato  
en acier zingué  
galvanized steel  
hierro cingado

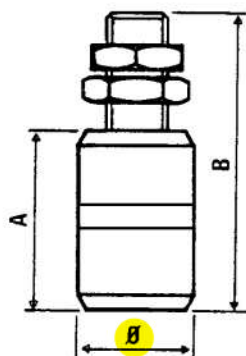
**Art. 960**  
Inox



Ø mm	25	32	42	42
A mm	35	40	40	59
B mm	70	74	74	104
CODICE ART.	460025	460030	4604240	460042
N° Pcs	10	10	10	10
Kg.	1,250	1,850	2,050	2,720

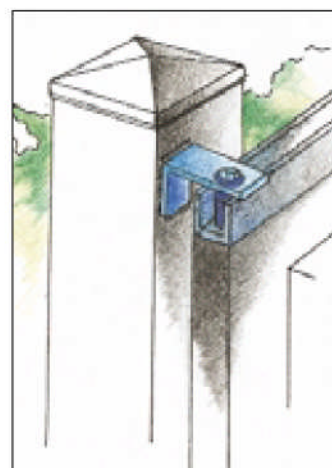
### Rulli di guida in ottone per cancelli scorrevoli

#### Art. 461



Rouleaux guide en laiton pour portail coulissants  
Brass roller guide for sliding gates  
Rodillos guías en laton por cancela corredera

in ottone  
laiton  
brass  
laton



Ø mm	32	40	42
A mm	40	40	59
B mm	74	74	104
CODICE ART.	461030	4614240	461042
N° Pcs	10	10	10
Kg.	7,240	5,500	7,260

### Supporto per cancelli a 2 rulli

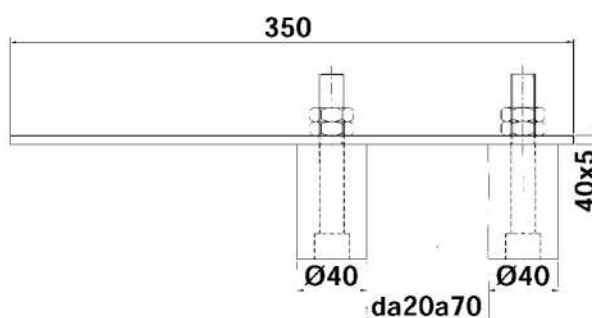
#### Art. 567



in ferro zincato  
en acier zingué  
galvanized steel  
hierro cingado

<b>Art.</b>	567
CODICE ART.	567
N° Pcs	1
Kg.	1,100

Support 2 rouleaux pour portail  
Support 2 rolls for gates  
Soporte por cancela a 2 rodillos

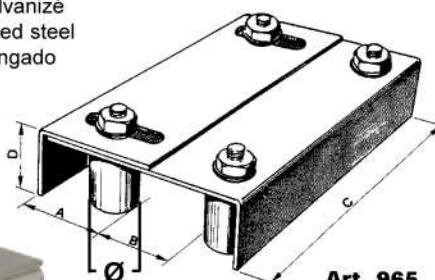


## Piastre di guida regolabili a 4 rulli per cancelli

**Art. 465-466-965**

Plaques guide portail coulissant à 4 rouleaux réglables  
Regulating 4 guides plate for sliding gates  
Soporte regulable 4 rodillos por cancela

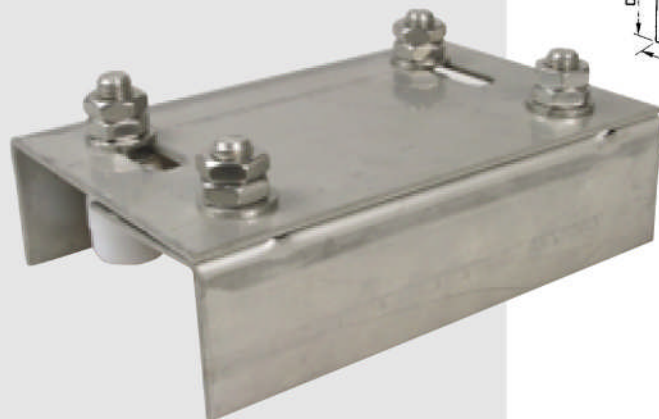
in acciaio zincato  
acier galvanisé  
galvanized steel  
acero cingado



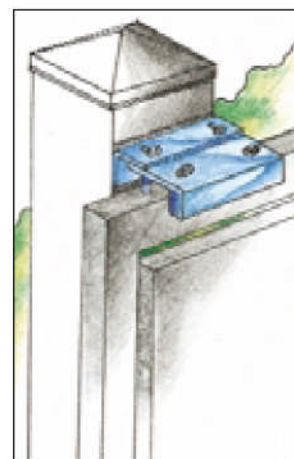
**Art. 465**  
con guide in nylon  
rouleaux nylon  
nylon rollers  
con rodillos en nylon

**Art. 466**  
con guide in ottone  
rouleaux laiton  
brass rollers  
con rodillos en laton

**Art. 965**  
Tipo piccolo  
Type petit  
small size  
Tipo pequeño



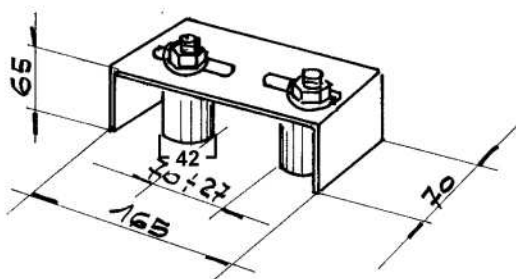
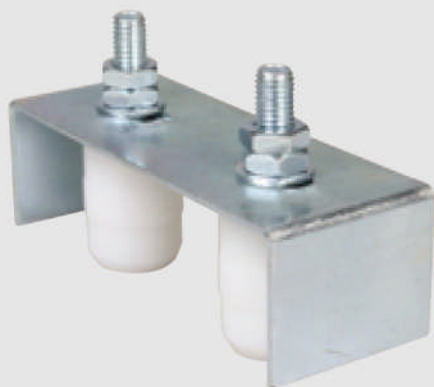
Tipo	PICCOLO PETIT SMALL	GRANDE GRAND BIG	MEDIO MOYEN MEDIUM	SP
A mm	45+70	55+100	55+75	55+100
Ø mm	32	42	42	42
B mm	20+60	60+100	20+60	60+100
C mm	220	350	220	290
D mm	55	65	55	65
COD. 465	465P	465G	465M	465/SP
COD. 466	466P	466G	-	-
N° Pcs	1	1	1	1
Kg.	2,300	5,600	2,700	4,500



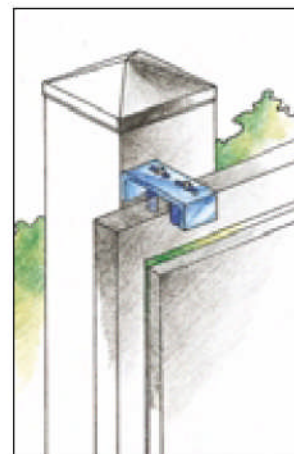
**Art. 464**

## Piastre di guida regolabili a 2 rulli

Plaques guide portail coulissant à 2 rouleaux réglables  
Regulating 2 guides plate for sliding gates  
Soporte regulable 2 rodillos por cancela



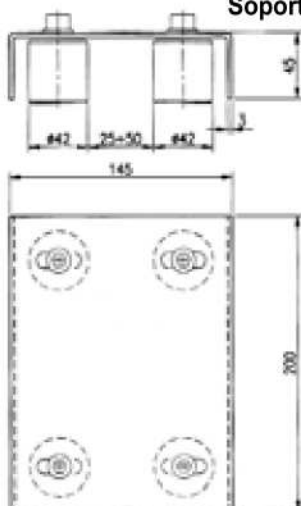
<b>Art.</b>	464	in acciaio zincato acier zingué galvanized steel acero cingado
CODICE ART.	464	
N° Pcs	1	
Kg.	1,00	



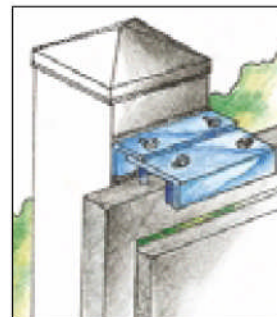
## Piastre di guida regolabili a 4 rulli (un solo pezzo)

Art. 467

Plaques guide portail coulissant à 4 rouleaux réglables - (1 piece)  
Regulating 4 guides plate for sliding gates - (1piece)  
Soporte regulable 4 rodillos por cancela (en 1 piezas)



In acciaio zincato con 4 rulli in nylon  
Acier zingué avec 4 rouleaux nylon  
Galvanized steel with 4 nylon guides  
Acero cingado con 4 rodillos en nylon

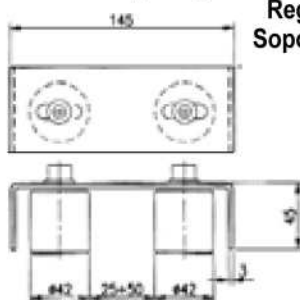
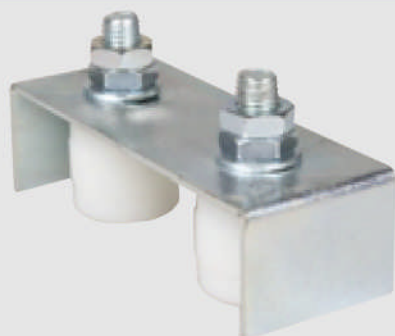


Art.	467
CODICE ART.	467
N° Pcs	1
Kg.	1,800

## Piastre di guida regolabili a 2 rulli - Tipo piccolo

Art. 467/2

Plaques guide portail coulissant à 2 rouleaux réglables - Type petit  
Regulating 2 guides plate for sliding gates - Small size  
Soporte regulable 2 rodillos por cancela - Tipo pequeno



In acciaio zincato con 2 rulli in nylon  
Acier zingué avec 2 rouleaux nylon  
Galvanized steel with 2 nylon guides  
Acero cingado con 2 rodillos en nylon

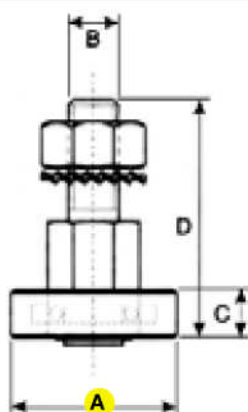
Art.	467/2
CODICE ART.	467/2
N° Pcs	1
Kg.	0,700

## Guide a cuscinetto per cancelli scorrevoli

Art. 462

Guide avec roulement a billes  
Guide with ball bearing

Guías a rodamiento de bolas por cancela corredera



In acciaio tropicalizzato  
Acier bichromate  
Yellow galvanized steel  
acero bicromatado

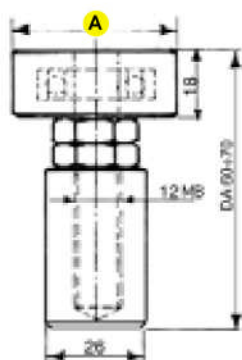
A mm	30	35	40
B mm	M14	M14	M14
C mm	9	10	12
D mm	45	58	58
CODICE ART.	462030	462035	462040
N° Pcs	10	10	10
Kg.	1,100	1,600	1,850

## Guida superiore a cuscinetto regolabile

Art. 463

Guide supérieure avec roulement a billes  
Superior guide with ball bearing

Guías superior a rodamiento de bolas regulable



In acciaio tropicalizzato  
Acier bichromate  
Yellow galvanized steel  
acero bicromatado

A mm	42	52
CODICE ART.	463042	463052
N° Pcs	10	10
Kg.	3,000	3,950