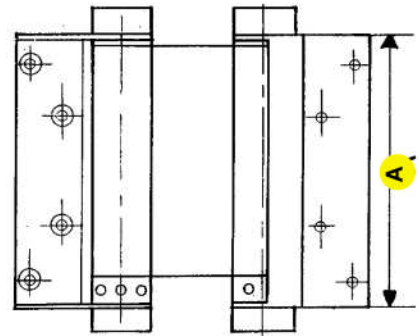
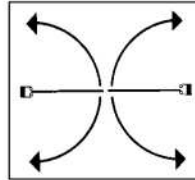
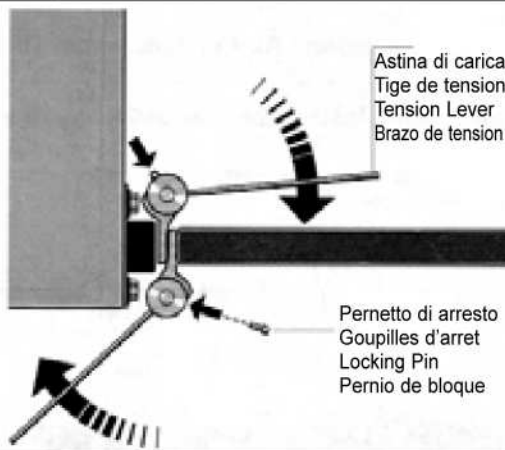


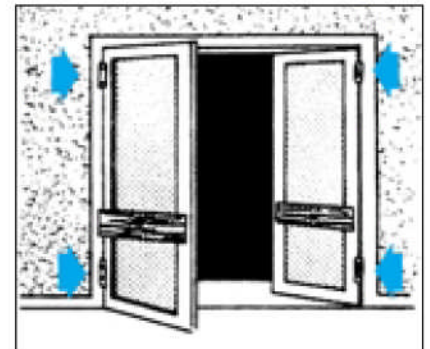
Cerniera a molle tipo "BOMMER" ad azione doppia
Art. 114
Charnières a ressort type « BOMMER » double action
Double acting spring hinges « BOMMER » type
Bisagra a muelle de doble accion

 acciaio inossidabile
 acier inox
 stainless steel
 Acero inox


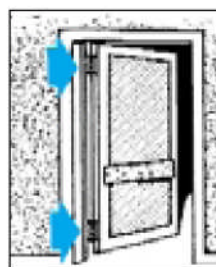
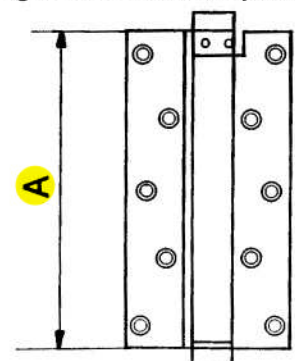
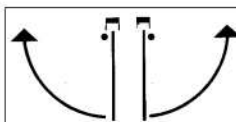
GRANDEZZA - GRANDEUR - SIZE	n.	29	30	33	36	
LUNGHEZZA - LONGUER - LENGTH - MEDIDA	Amm	75	100	125	150	
PER PORTE POUR PORTES FOR DOORS POR PUERTAS	LARGHEZZA - LARGEUR - WIDTH	mm.	600	700	700	750
	SPESSORE - EPAISSEUR - THICKNESS	mm.	18-25	25-30	30-35	35-40
	PESO - POIDS - WEIGHT	kg.	15	22	27	40
CODICE ART.			114029	114030	114033	114036

 Schema di tensionamento cerniere
 Tension des charnières
 Tensioning of Double Action Hinges
 Tension de las muelles

 Boccola di tensione
 Bague de tension
 Tension ring
 Brazo de tension

 Astina di carica
 Tige de tension
 Tension Lever
 Brazo de tension

 Pernetto di arresto
 Goupilles d'arret
 Locking Pin
 Pernio de bloque


N°	29	30	33	36
N° Pair	1	1	1	1
Kg.	1,050	1,400	1,820	2,800

Cerniera a molla tipo "BOMMER" ad azione semplice
Art. 101/I
Charnières a ressort type « BOMMER » a action simple
Single acting spring hinges « BOMMER » type
Bisagra a muelle de simple accion

 acciaio inossidabile
 acier inox
 stainless steel
 Acero inox


GRANDEZZA - GRANDEUR - SIZE	n.	0	1	5	9	
LUNGHEZZA - LONGUER - LENGTH - MEDIDA	Amm	75	100	125	150	
peso 1 scatola (2 paia) - poids 1 boîte (2 paires) weight 1 box (2 pairs)	Kg.	1,100	1,400	1,900	2,800	
PER PORTE POUR PORTES FOR DOORS POR PUERTAS	LARGHEZZA - LARGEUR - WIDTH	mm.	600	700	700	750
	SPESSORE - EPAISSEUR - THICKNESS	mm.	18-25	25-30	30-35	35-40
	PESO - POIDS - WEIGHT	kg.	15	22	27	40
CODICE ART.			101029I	101030I	101033I	101036I



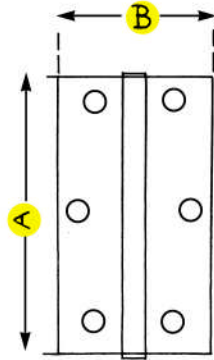
INOX

Art. 950



Cerniere in acciaio inox - tipo stretto

Charnieres en acier inox - type etroit
Stainless steel hinge - narrow type
Bisagra en acero inox - modelo estrecho



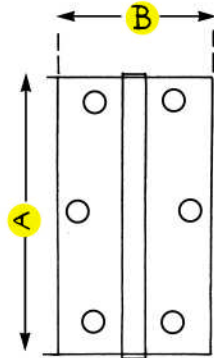
AxB mm	30x20	35x22	40x25	50x30	60x35	70x40	90x50	100x50
SPESSORE TICKNESS	0,8	0,8	1	1	1	1,2	1,2	1,2
CODICE ART.	9503020	9503522	9504025	9505030	9506035	9507040	9509050	95010050
N° Pcs	24	24	24	24	24	24	24	24
Kg.	0,150	0,180	0,250	0,390	0,550	0,960	1,880	2,040

Art. 951



Cerniere in acciaio inox - tipo quadro

Charnieres en acier inox - type carre
Stainless steel hinge - square type
Bisagra en acero inox - modelo cuadrado



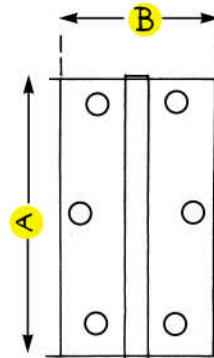
AxB mm	30x30	40x40	50x50	60x60	70x70	80x80
SPESSORE TICKNESS	0,8	1	1	1	1,2	1,2
CODICE ART.	9513030	9514040	9515050	9516060	9517070	9518080
N° Pcs	24	24	24	24	24	24
Kg.	0,196	0,333	0,590	0,840	1,466	1,820

Art. 955



Cerniere in acciaio inox - tipo pesante perno fisso

Charnieres en acier inox - type lourd pivot fixe
Stainless steel hinge - fixed pin heavy type
Bisagra en acero inox - modelo fuerte



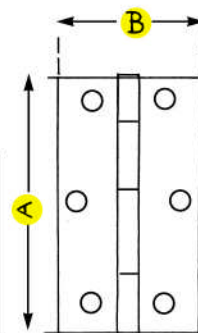
AxB mm	50x38	63x44	75x50	88x58
SPESSORE TICKNESS	1,5	1,5	2	2
CODICE ART.	9555038	9556344	9557550	9558858
N° Pcs	24	24	24	10
Kg.	0,800	1,000	1,390	1,119



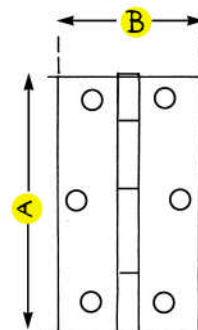
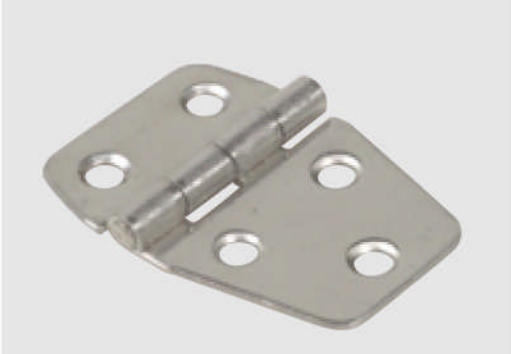
INOX

Cerniere in acciaio inox con 2 cuscinetti a sfera**Art. 970****Charnieres en acier inox avec 2 roulements a billes**
Stainless steel hinge with 2 ball bearings
Bisagra en acero inox con 2 rodamientos de bolas**Art. 970**Perno fisso - POMOLO PIANO - acciaio inox satinato
Pivot fixe - BOUCHONS PLATS - acier inox satiné
Fixed pin - FLAT KNOB - satin finish stainless steel
Perno fijo - acero inox satin

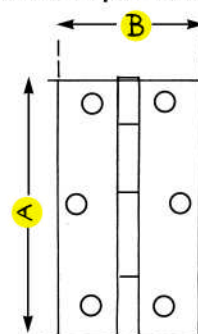
AxB inch	3x2,5"	3x3"	3,5x3"	4x3"	4x3,5"	5x4"
SPESSORE TICKNESS	2	2	2,5	3	3	3
CODICE ART.	9703025	9703030	9703530	9704030	9704035	9705040
N° Pcs	2	2	2	2	2	2
Kg.	0,270	0,300	0,390	0,580	0,650	0,910

**Cerniere tipo nautico in acciaio inox****Art. 956****Charnieres en acier inox type marin**
Stainless steel hinges
Bisagra en inox tipo nautico

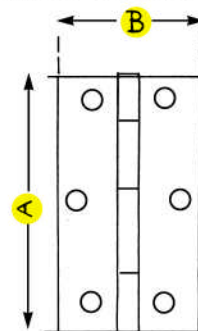
AxB mm	40x42
SPESSORE TICKNESS	1,5
CODICE ART.	95604042
N° Pcs	24
Kg.	0,543

**Cerniere tipo nautico in acciaio inox****Art. 957****Charnieres en acier inox type marin**
Stainless steel hinges
Bisagra en inox tipo nautico

AxB mm	40x55
SPESSORE TICKNESS	1,5
CODICE ART.	95704055
N° Pcs	24
Kg.	0,630

**Cerniere tipo nautico in acciaio inox****Art. 958****Charnieres en acier inox type marin**
Stainless steel hinges
Bisagra en inox tipo nautico

AxB mm	40x70
SPESSORE TICKNESS	1,5
CODICE ART.	95804070
N° Pcs	24
Kg.	0,756

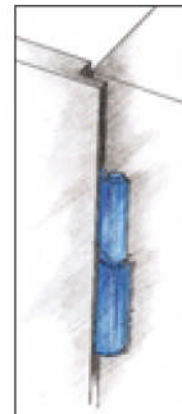
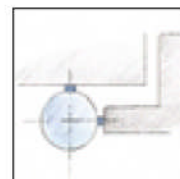
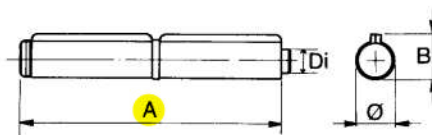


INOX

Art. 901

Cerniere a saldare perno sfilabile in acciaio inox

Charnieres à souder pivot degondable en acier inox
Hinges to weld removable pin in stainless steel
Pernios a soldar eje deslizable en inox



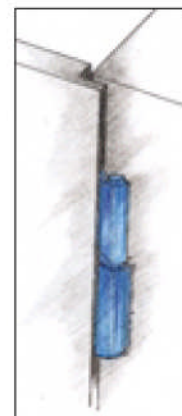
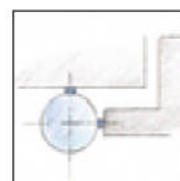
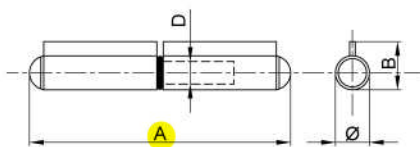
A mm	80	100	120	140
Ø mm	12	13,5	15	16,6
B mm	16,5	18	19,5	22
D mm	8	8,5	10	10,5
CODICE ART.	901080	901100	901120	901140
N° Pcs	24	24	24	24
Kg.	1,850	2,800	3,860	5,850

A 2 ALI
2 PIECES
2 WINGS
2 PIEZAS

Art. 900

Cerniere a saldare perno fisso in acciaio inox

Charnieres à souder pivot fixe en acier inox
Hinges to weld with fixed pin in stainless steel
Pernios en chapa con tapones en inox



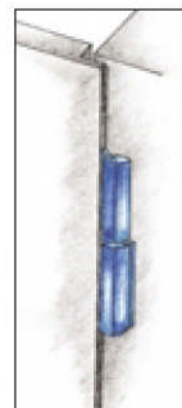
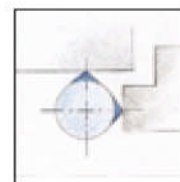
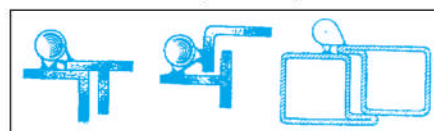
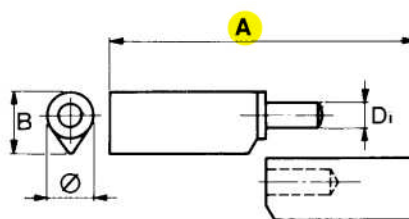
A mm	80	100	120	140
Ø mm	12	13,5	14,5	16
B mm	17	19	20	21
D mm	8	9	10	11
CODICE ART.	900080	900100	900120	900140
N° Pcs	24	24	24	24
Kg.	1,540	2,300	3,300	4,150

Art. 914

Cerniere con costa da saldare a perno fisso in acciaio inox

Paumelles ovales à souder pivot fixe en acier inox
Drop profile hinges to weld fixed pin in stainless steel
Pernios perfil lagrima en inox

ranella inox
bague inox
stainless steel ring
aranoela inox



A mm	40	60	80	100	120	140	160
Ø mm	10	10	12	14	16	16	20
B mm	12	12	14	16	18	18	23
D mm	6	6	7	8	9	9	12
CODICE ART.	914040	914060	914080	914100	914120	914140	914160
N° Pcs	24	24	24	24	24	24	12
Kg.	0,650	0,900	1,750	3,000	4,700	5,400	4,850

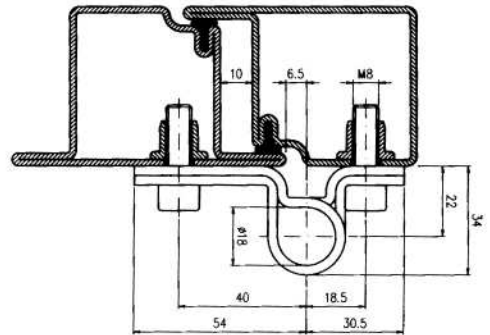
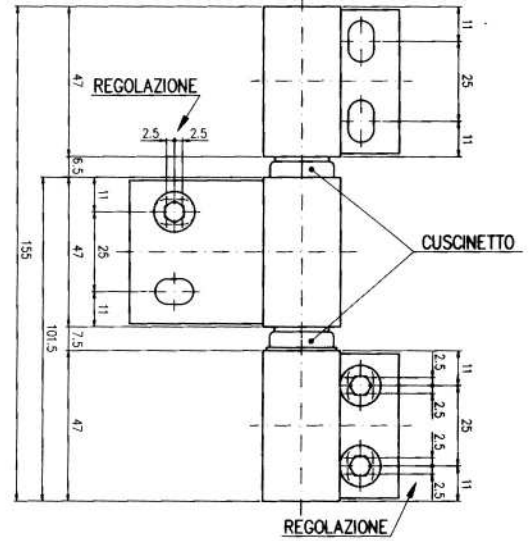
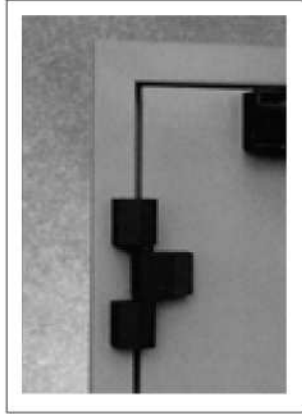


INOX

Cerniere per porte pesanti e tagliafuoco in acciaio inox

Art. 942-943

Charniere pour portes lourdes et coupe feu en inox
Special hinge for heavy doors and fire doors stainless steel
Bisagra para puertas corta fuego con rodamiento



Art.	942	943
CODICE ART.	942	943
N° Pcs	2	2
Kg.	1,700	2,000

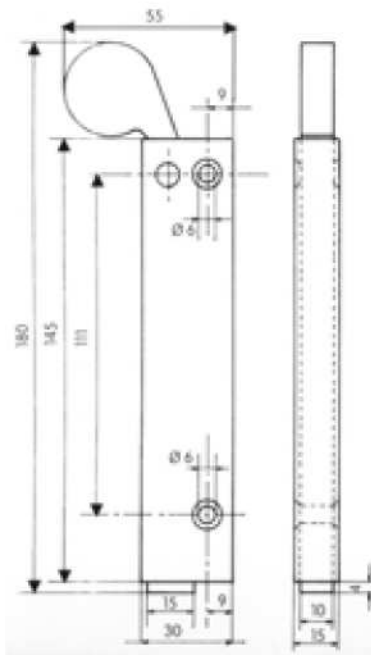
Art. 942
 a 2 ali (portata 2 cerniere Kg. 80)
 2 volets (force 2 charnières Kg. 80)
 2 wings (max door weight Kg. 80)
 2 piezas (fuerza 2 pernios Kg. 80)

Art. 943
 a 3 ali (portata 2 cerniere Kg. 150)
 3 volets (force 2 charnières Kg. 150)
 3 wings (max door weight Kg. 150)
 3 piezas (fuerza 2 pernios Kg. 150)

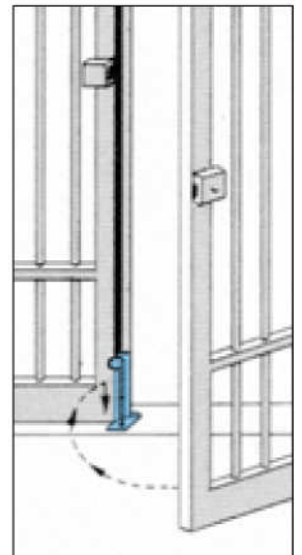
Paletti automatici per cancelli a 2 ante

Art. 918

Verrou automatique pour portails 2 ventails
Automatic bolt for 2 leaf gates
Pasador automatico por puertas de 2 hojas



Art.	918
CODICE ART.	918
N° Pcs	6
Kg.	2,530



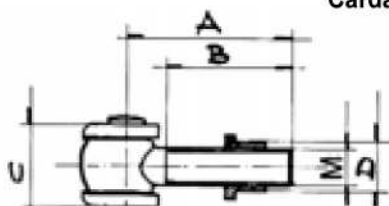
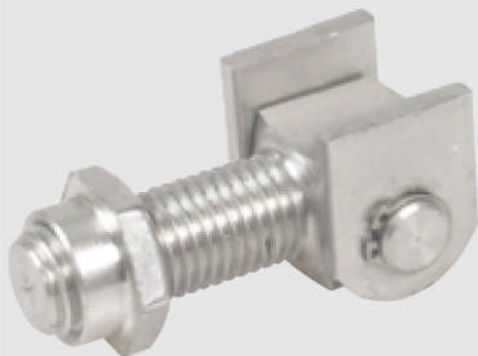
INOX



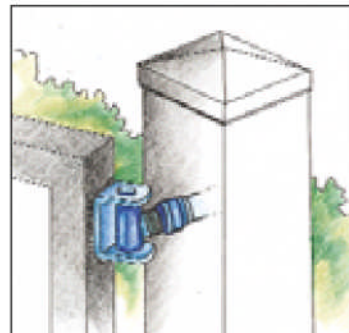
INOX

Cardine in inox regolabile per cancello**Art. 925**

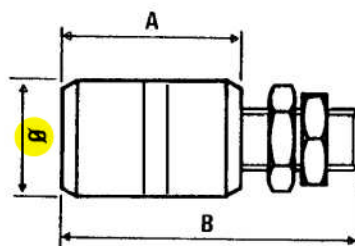
Charniere réglable en inox pour portails
Regulating hinge in stainless steel for gates
Cardan en inox regulable para cancelas



M	20	24
A mm	80	72
B mm	60	50
C mm	40	48
D mm	25	30
CODICE ART.	925020	925024
N° Pcs	10	5
Kg.	3,800	3,350

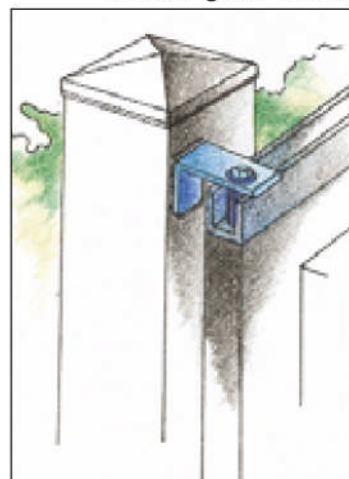
**Rulli di guida per cancelli scorrevoli in inox****Art. 960 - 960/A**

Rouleaux guide en nylon pour portail coulissants
Nylon roller guide for sliding gates
Rodillos guías en inox

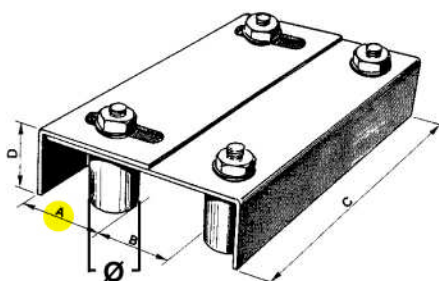


Ø mm	32	40
A mm	40	40
B mm	74	74
CODICE ART.	960	960A
N° Pcs	10	10
Kg.	1,850	2,200

con rulli in nylon
rouleaux en nylon
with nylon roller
con rodillos en nylon

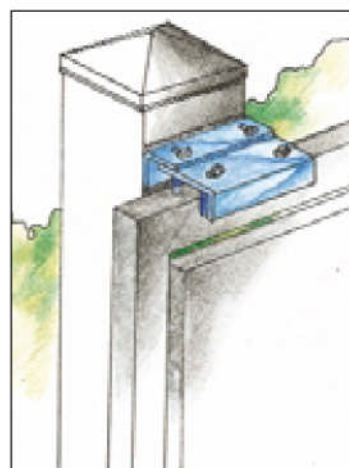
**Piastre di guida regolabili in inox a 4 rulli per cancelli****Art. 965**

Plaques guide portail coulissant à 4 rouleaux réglables
Regulating 4 guides plate for sliding gates
Soporte regulable en inox 4 rodillos por cancela (en 2 piezas)



a 4 rulli in nylon
4 rouleaux nylon
4 nylon rollers
4 rodillos en nylon

A mm	45+70
Ø mm	32
B mm	20+60
C mm	220
D mm	55
CODICE ART.	965
N° Pcs	1
Kg.	2,500





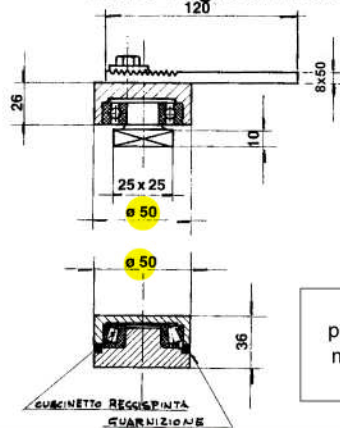
INOX

Cardini a cuscinetti per cancelli in inox Ø 50

Art. 938-939

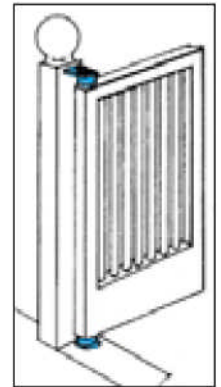


Punto de giro en inox con rodamiento de bolas por cancela hierro Ø 50



Art.	938	939
CODICE ART.	938939	
N° Pcs	1+1	
Kg.	1,490	

portata 1 coppia kg.500
poids maximum portail kg.500
maximum weight load kg.500
fuerza 1 juego Kg. 500



Cardini a cuscinetti per cancelli in inox Ø 70

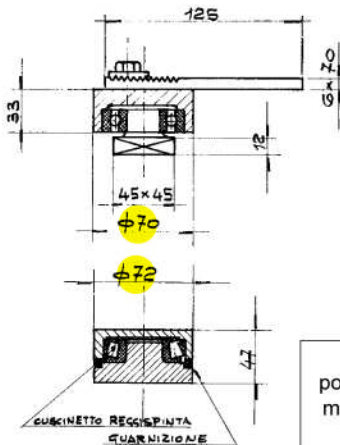
Art. 948-949



Pivot avec roulements à billes pour portails Ø 70

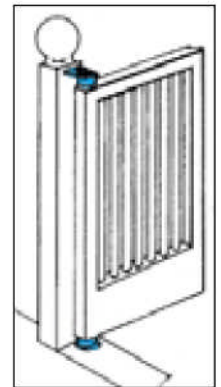
Ball bearing hinges for gates Ø 70

Punto de giro en inox con rodamiento de bolas por cancela hierro Ø 70



Art.	948	949
CODICE ART.	948949	
N° Pcs	1+1	
Kg.	3,200	

portata 1 coppia kg.1.000
poids maximum portail kg.1.000
maximum weight load kg.1.000
fuerza 1 juego Kg. 1.000



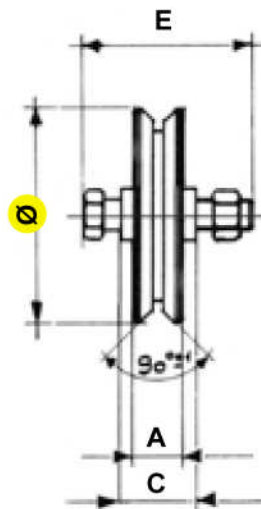
Ruota per cancelli - 1 cuscinetto a sfera - Gola V

Art. 962

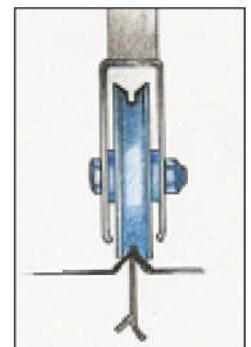
Roues pour portail coulissant - 1 roulement à billes - Gorge V

Wheels for sliding gates - 1 ball bearing - Groove V

Poleas por cancela - 1 rodamiento de bolas - Canal V



acciaio inossidabile
acier inox
stainless steel
acero inox



Ø mm	80	100	120
A mm	20	20	20
C mm	33	33	33
E mm	14x60	14x60	14x60
Portata 2 ruote Force 2 roues Kg. Capacity 2 wheels Capacidad 2 poleas	300	400	400
CODICE ART.	962080	962100	962120
N° Pcs	1	1	1
Kg.	0,750	1,100	1,700



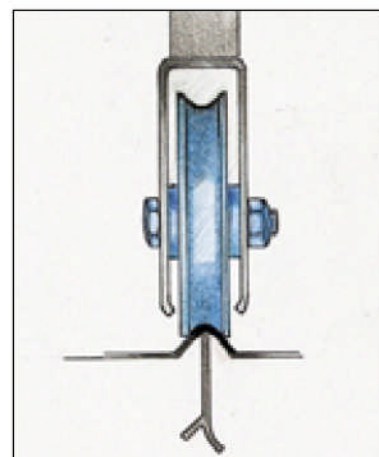
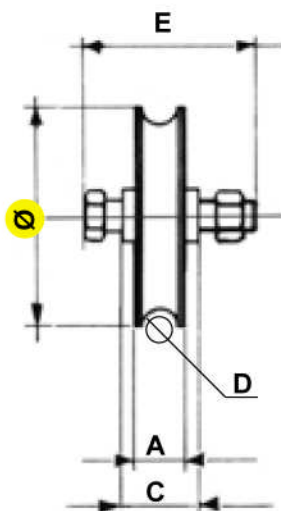
INOX

Art. 961



Ruota per cancelli - 1 cuscinetto a sfera - Gola Tonda

Roues pour portail coulissant - 1 roulement à billes - Gorge ronde
 Wheels for sliding gates - 1 ball bearing - Round groove
 Poleas por cancela - 1 rodamiento de bolas - Canal redondo



Ø mm	80	100	120
A mm	20	20	20
C mm	33	33	33
E mm	14x60	14x60	14x60
D mm	14	14	14
Portata 2 ruote Force 2 roues Kg. Capacity 2 wheels Capacidad 2 poleas	300	400	400
CODICE ART.	961080	961100	961120
N° Pcs	1	1	1
Kg.	0,750	1,100	1,700

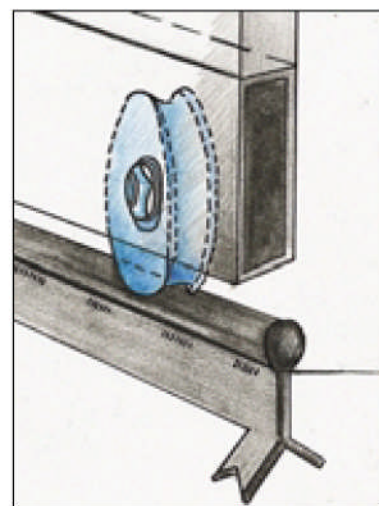
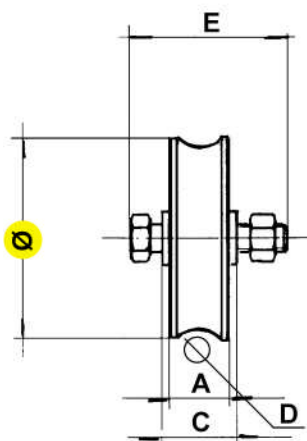
acciaio inossidabile
 acier inox
 stainless steel
 acero inox

Art. 964



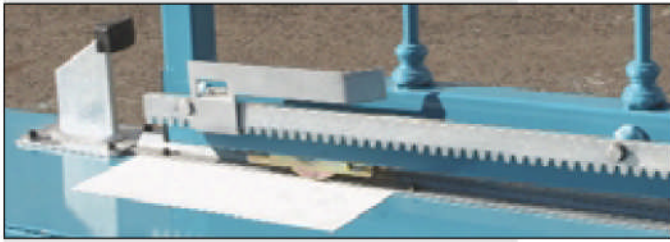
Ruota per cancelli - 1 cuscinetto a sfera - Gola Tonda Ø 20

Roues pour portail coulissant - 1 roulement à billes - Gorge ronde Ø 20
 Wheels for sliding gates - 1 ball bearing - Round groove Ø 20
 Poleas por cancela - 1 rodamiento de bolas - Canal redondo Ø 20

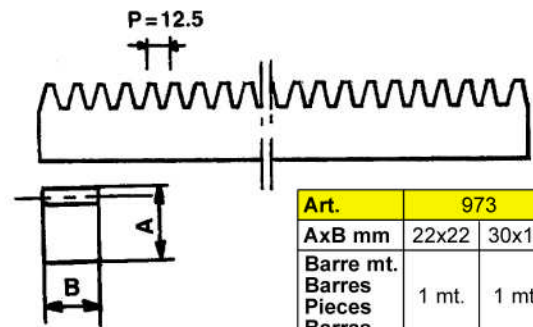


Ø mm	80	100	120	140
A mm	25	25	25	25
C mm	33	33	33	43
E mm	14x60	14x60	14x60	16x70
D mm	20	20	20	20
Portata 2 ruote Force 2 roues Kg. Capacity 2 wheels Capacidad 2 poleas	300	400	400	600
CODICE ART.	964080	964100	964120	964140
N° Pcs	1	1	1	1
Kg.	0,650	1,200	1,650	2,500

acciaio inossidabile
 acier inox
 stainless steel
 acero inox

Cremagliera in acciaio inox per cancelli scorrevoli
Art. 973


Cremaillere en inox pour portails coulissants
 Rack inox for sliding gates
 Cremallera en acero inox para correderas

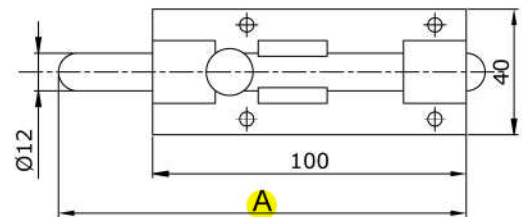


Art.	973	
AxB mm	22x22	30x12
Barre mt. Barres Pieces Barras	1 mt.	1 mt.
CODICE ART.	9730222Z	9730301Z
N° Pcs	1	1
Kg.	3,000	2,500

Sezione: A x B \square 22 x 22 barre mt. 1
 A x B \square 30 x 12 barre mt. 1 con asole

Catenaccio tondo porta lucchetto in acciaio inox
Art. 963

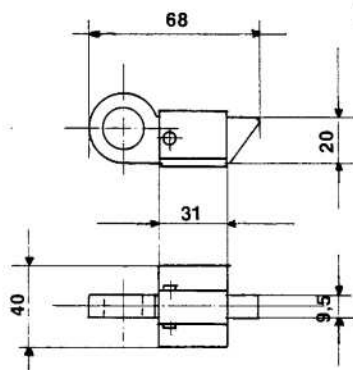
Verrou rond porte cadenas en acier inox
 Barrel bolt for padlocks in stainless steel
 Pasador redondo en inox con porta candado



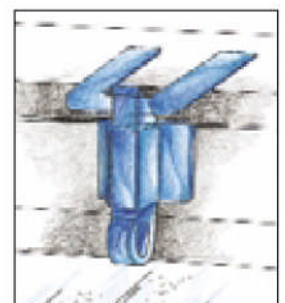
A mm	150
CODICE ART.	963
N° Pcs	10
Kg.	2,200

Cricchetti medi per sopraluci in acciaio inox
Art. 912

Loqueteaux pour wasistas à souder en acier inox
 Catches for wasistas to weld in stainless steel
 Pestillo medio in inox para ventanas abatible



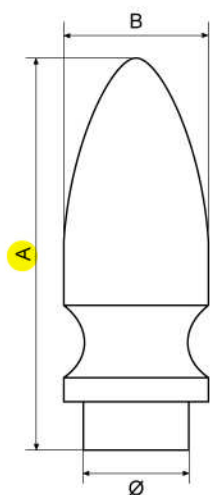
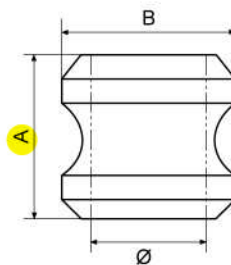
Art.	912
CODICE ART.	912
N° Pcs	25
Kg.	2,400



Lance e borchie decorative in acciaio inox
Art. 910-915

Lances et noeuds decoratives en acier inox
 Decorative spears in Stainless Steel
 Puntas de flecha y macollas en acero inox


Art. 910

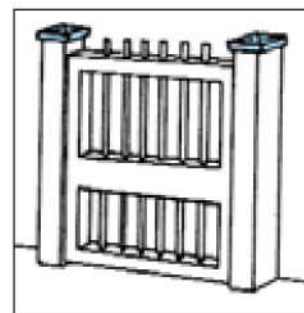
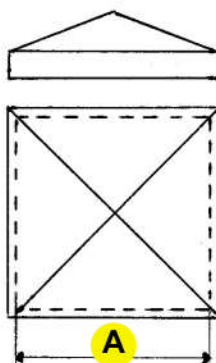
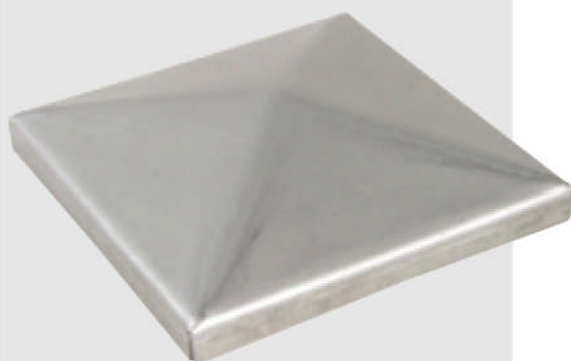
Art. 915

Art. 910

Art. 915

Art. 910 Tipo	PICCOLO PETIT SMALL	GRANDE GRAND BIG
A mm	63	80
B mm	23	30
Ø mm	17	22
CODICE ART.	910P	910G
N° Pcs		
Kg.		

Art. 915 Tipo	PICCOLO PETIT SMALL	GRANDE GRAND BIG
A mm	25	33
B mm	25	33
Ø mm	20	25
CODICE ART.	915P	915G
N° Pcs		
Kg.		

Art. 998
Copripilastrì quadri in acciaio inox

Couvertures pour piliers carrés en acier inox
 Stainless steel square cover
 Tapos en inox tipo cuadro

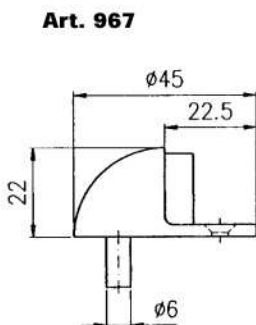
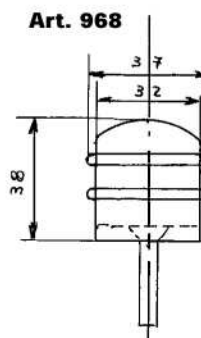
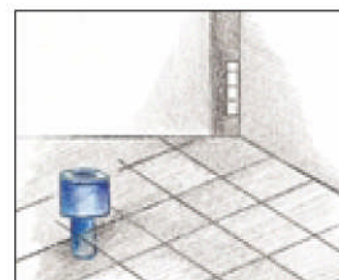


A mm	30	40	50	60	80	100	120	150
CODICE ART.	998030	998040	998050	998060	998080	998100	998120	998150
N° Pcs	200	100	100	50	50	30	20	10
Kg.	2,150	6,900	6,300	5,500	5,950	6,800	12,200	10,400

Art. 967-968
Arresto per porte in inox

Arret pour portes en inox
 Door opening stop in inox
 Tope de puerta en inox


Art. 967

Art. 968

Art. 967

Art. 968


COMPLETA DI VITI E TASSELLI
 AVEC VIS ET CHEVILLE
 WITH SCREW
 COMPLETO DI TORNILLOS Y TACO

Art.	967	968
CODICE ART.	967	968
N° Pcs		
Kg.		