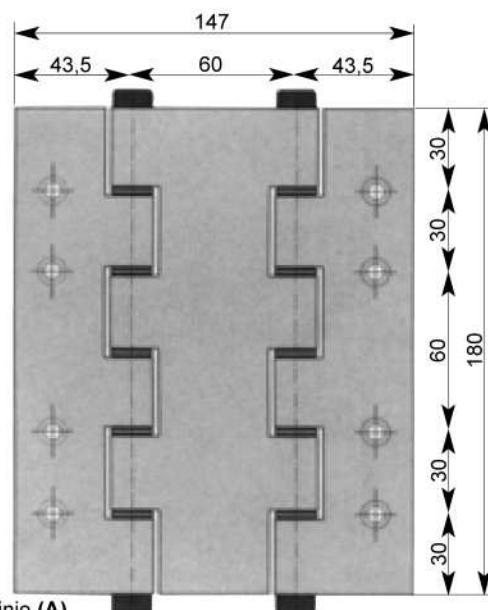


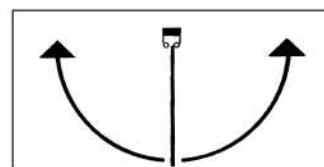
Art. 138



Art.	138
COD. ART. (N)	138N
COD. ART. (B)	138B
COD. ART. (A)	138A
N° Paia	1
Kg.	1,150

Nero opaco (N) - bianco (B) - alluminio (A)
Noir (N) - blanc (B) - argent (A)
Black (N) - white (B) - silver (A)
Negro (N) - blanco (B) - plata (A)

Portata 2 cerniere Capacite pour 2 charnieres Loading charge for 2 hinges Fuerza 2 bisagras	Kg. 35/40
--	--------------

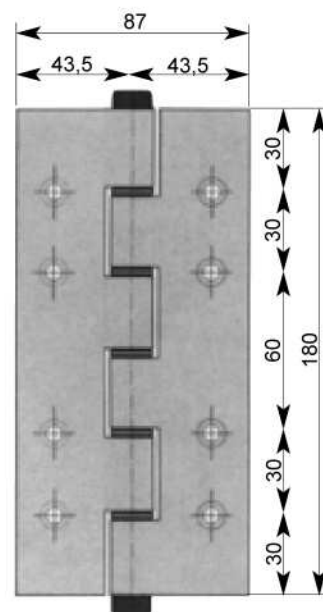


Art. 128



Cerniera a molla azione singola in alluminio

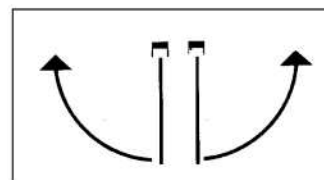
Charniere à ressort simple action en aluminium
Spring hinge single acting in aluminium
Bisagra a muelle de simple accion en aluminio



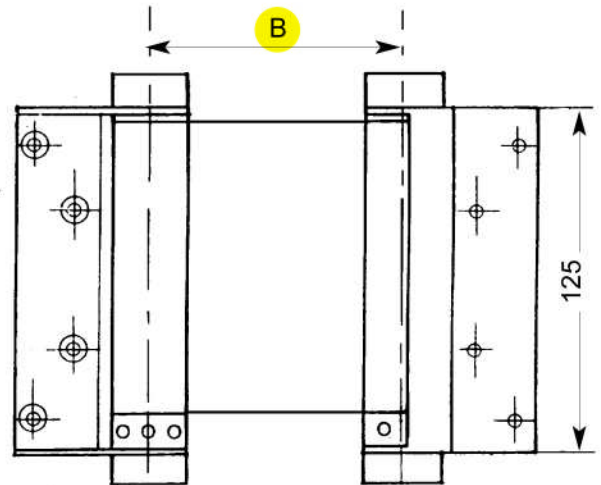
Art.	128
COD. ART. (N)	128N
COD. ART. (B)	128B
COD. ART. (A)	128A
N° Paia	1
Kg.	0,720

Nero opaco (N) - bianco (B) - alluminio (A)
Noir (N) - blanc (B) - argent (A)
Black (N) - white (B) - silver (A)
Negro (N) - blanco (B) - plata (A)

Portata 2 cerniere Capacite pour 2 charnieres Loading charge for 2 hinges Fuerza 2 bisagras	Kg. 35/40
--	--------------



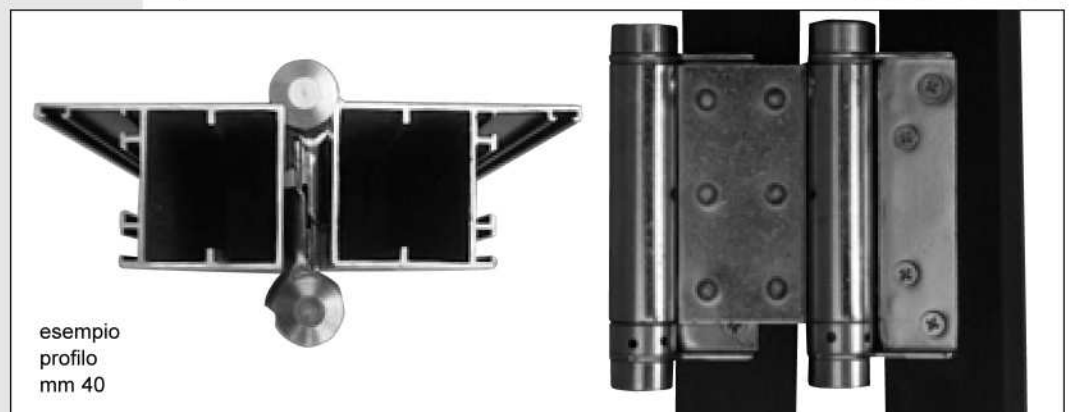
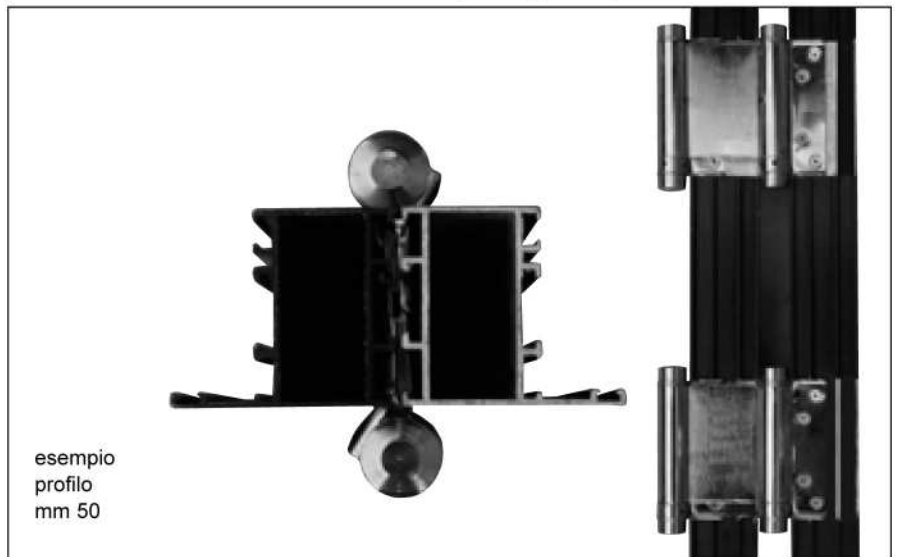
Charnieres a ressort type "BOMMER" double action pour profils en aluminium
Double acting spring hinges "BOMMER" type for aluminium profiles
Bisagra a muelle de doble accion por perfiles en aluminio



B = 66 per profili da mm 40
B = 76 per profili da mm 50

GRANDEZZA - GRANDEUR - SIZE		B mm	66	50
LUNGHEZZA - LONGUER - LENGTH - MEDIDA		A mm	125	125
PER PORTE POUR PORTES FOR DOORS POR PUERTAS	LARGHEZZA-LARGEUR-WIDTH	mm	700	700
	SPESORE-EPAISSEUR-TICKNESS	mm	40	50
	PESO-POIDS-WEIGHT	kg	30	30
CODICE ART.			118040	118050
N° Pcs PAIA - PAIRES -PAIRS			1	1
Kg.			2,100	2,100

acciaio verniciato nero
en acier verni noir
black lackered steel
hierro pintado negro

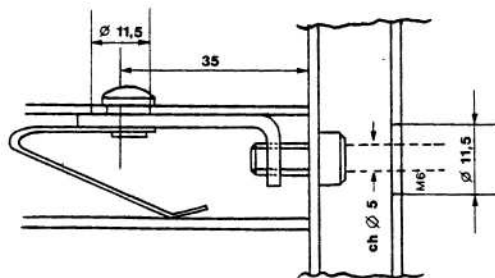


Art. 501



Cerniera a molla per collegamenti a "T" di serramenti in alluminio

Junction a ressort pour connection a T de profiles aluminium
T - junction for aluminium profiles
Junction por perfiles en aluminio



acciaio tropicalizzato
acier bichromaté
yellow galvanized steel
hierro bicromatado

A mm	36	40	45
CODICE ART.	501036	501040	501045
N° Pcs	200	200	200
Kg.	8,200	9,200	10,000

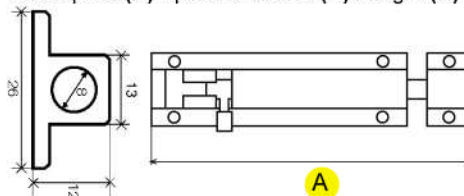
Art. 26



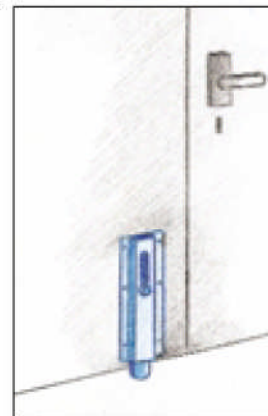
Catenacci in alluminio tipo stretto

Verrous en aluminium type etroit
Bolt in aluminium narrow type
Pasadores en aluminio tipo estrecho

In alluminio anodizzato argento (A) - verniciato bianco (B) / nero (N)
En aluminium anodise alu (A) - verni blanc (B) / noir (N)
Aluminium anodized silver (A) - lackered white (B) / black (N)
Anod. plata (A) - pintado blanco (B) / negro (N)



A mm	50	80	100	150	200	300
COD. ART. (A)	026050A	026080A	026100A	026150A	026200A	026300A
COD. ART. (B)	026050B	026080B	026100B	026150B	026200B	026300B
COD. ART. (N)	026050N	026080N	026100N	026150N	026200N	026300N
N° Pcs	20	20	20	20	20	20
Kg.	0,857	1,250	1,550	2,220	2,850	4,380



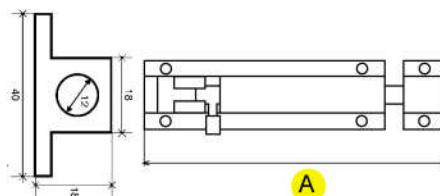
Art. 27



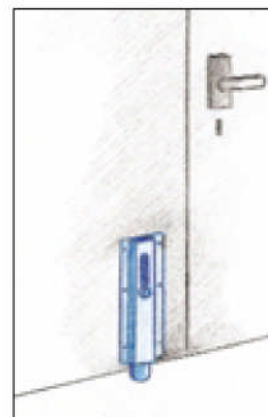
Catenacci in alluminio

Verrous en aluminium
Bolt in aluminium
Pasadores en aluminio

In alluminio anodizzato argento (A) - verniciato bianco (B) / nero (N)
En aluminium anodise alu (A) - verni blanc (B) / noir (N)
Aluminium anodized silver (A) - lackered white (B) / black (N)
Anod. plata (A) - pintado blanco (B) / negro (N)

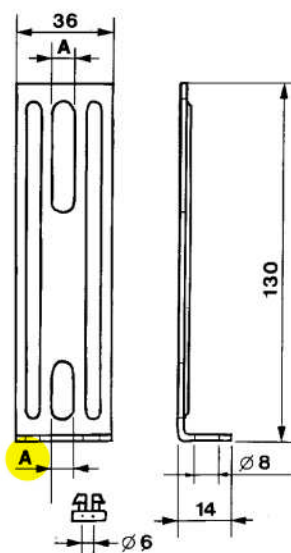


A mm	100	150	250	350
COD. ART. (A)	027100A	027150A	027250A	027350A
COD. ART. (B)	027100B	027150B	027250B	027350B
COD. ART. (N)	027100N	027150N	027250N	027350N
N° Pcs	6	6	6	6
Kg.	1,100	1,650	2,600	3,600



Guide aste per serramenti in alluminio

Art. 502



acciaio tropicalizzato
acier bichromaté
yellow galvanized steel
hierro bicromatado

cava A = 6 mm.
8 mm.
(da precisare)

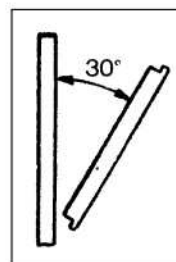
CAVA A mm	6	8
CODICE ART.	502006	502008
N° Pcs	50	50
Kg.	5,100	

Cerniera per finestre Wasistas in alluminio

Art. 504/A-504/B

Charniere pour fenetres a wasistas en aluminium 1 position d'ouverture
Hinges for aluminium wasistas window 1 opening
Bisagra para ventanas Wasistas en aluminio

in acciaio zincato
acier galvanizé
galvanized steel
hierro cingado



Art.	504/A	504/B
CODICE ART.	504A	504B
N° Pcs	10	10
Kg.	2,800	

Art. 504/A

per profili: NC 40 - NC 50 - EUROPA PLANA
PS - ESA 40 - ESA 50 - COMPOSITAL
e altri profili con luce camera mm.13

Art. 504/B

per profili: GR 9 - MEC 40 - MEC 50 - GPB
e altri profili con luce camera mm.15

