

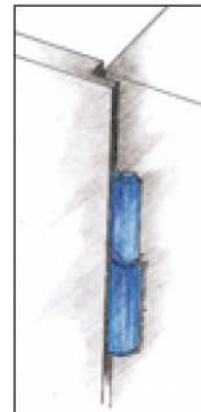
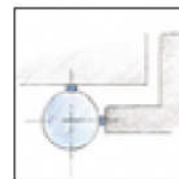
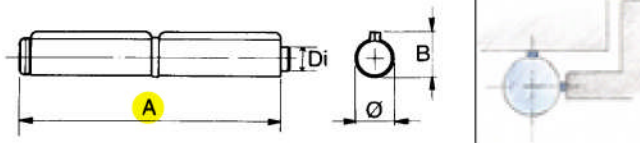
Cerniere da saldare a 2 ali perno sfilabile

Charnieres à souder 2 volets pivot degondable
Hinges to weld 2 wings removable pin
Pernios en chapa 2 alas - eje deslizante

Art. 401



in acciaio lucido
acier naturel
natural steel
hierro natural



A mm	60	80	100	120	140	170	200
Ø mm	9,5	12	13,5	15	16,6	17,5	22
B mm	13	16,5	18	19,5	22	23,5	25
D mm	6	8	8,5	10	10,5	12	14
CODICE ART.	401060	401080	401100	401120	401140	401170	401200
N° Pcs	24	24	24	24	24	12	12
Kg.	0,960	1,850	2,750	4,030	5,700	4,100	7,200

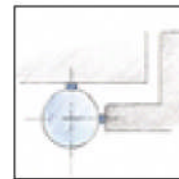
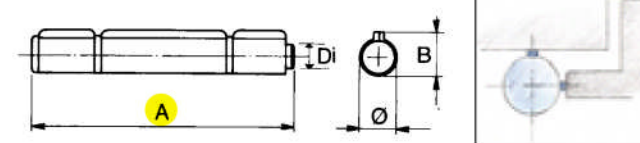
Cerniere da saldare a 3 ali perno sfilabile

Charnieres à souder 3 volets pivot degondable
Hinges to weld 3 wings removable pin
Pernios en chapa 3 alas - eje deslizante

Art. 402



in acciaio lucido
acier naturel
natural steel
hierro natural



A mm	80	100	120	140	170	200
Ø mm	12	13,5	15	16,5	17,5	20
B mm	16,5	18	19,5	22	23,5	27
D mm	8	8,5	10	10,5	12	14
CODICE ART.	402080	402100	402120	402140	402170	402200
N° Pcs	24	24	24	24	12	12
Kg.	1,850	2,700	4,020	5,600	4,100	6,300

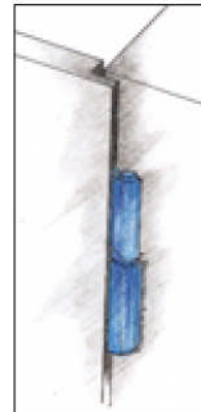
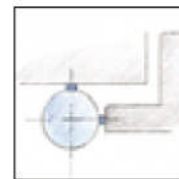
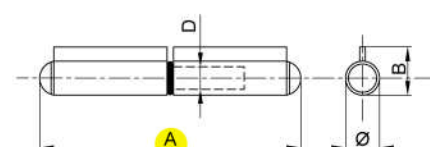
Cerniere da saldare a tappo con perno fisso

Paumelles a souder avec bouchon pivot fixe
Plug hinges with fixed pin to be welded
Pernios en chapa con tapones

Art. 400



in acciaio lucido
acier naturel
natural steel
hierro natural



A mm	60	80	100	120	140	170	200
Ø mm	12	12	13,5	14,5	16	17	20
B mm	17	17	19	20	21	23,5	26,5
D mm	8	8	9	10	11	12	14
CODICE ART.	400060	400080	400100	400120	400140	400170	400200
N° Pcs	24	24	24	24	24	12	12
Kg.	1,000	1,750	2,550	3,620	5,030	2,900	4,600

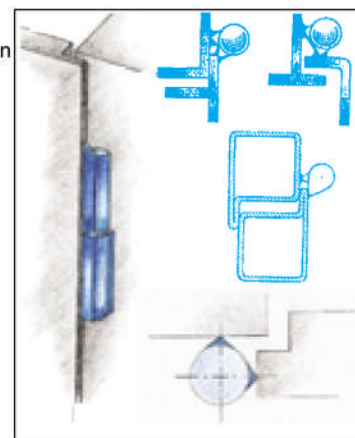
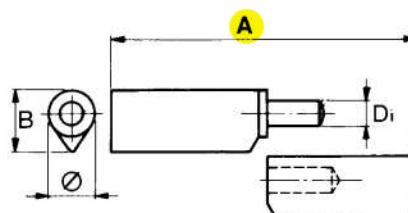
Cerniera con costa da saldare perno fisso

Art. 414-414/A-414/O

Paumelles ovales à souder pivot fixé
Drop profile hinges to weld fixed pin
Pernios perfil lagrima

- Art. 414** con perno ottonato
pivot laitonné
brassed pin
pernio latonado
- Art. 414/A** con perno ferro e ranella ottone
pivot acier bague laiton
steel pin brass ring
pernio hierro + arandela laton

- Art. 414/O** con perno ottone e ranella ottone
pivot et bague en laiton
pin and ring in brass
pernio + arandela laton

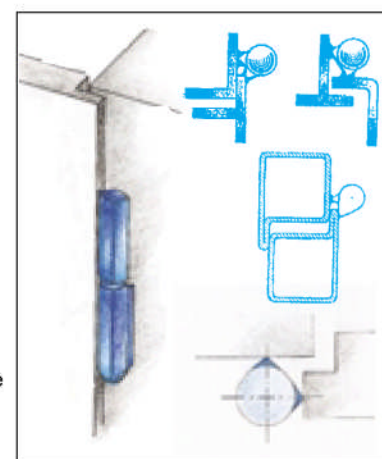
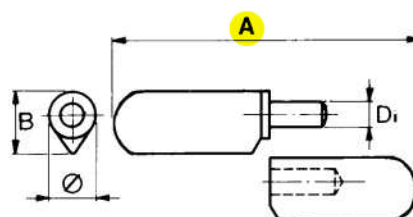


A mm	40	60	80	100	120	140	160	180	200
Ø mm	10	10	12	14	16	16	20	22	22
B mm	12	12	14	16	18	18	23	25	25
D mm	6	6	7	8	9	9	12	14	14
COD. 414	414040	414060	414080	414100	414120	414140	-	-	-
COD. 414/A	414040A	414060A	414080A	414100A	414120A	414140A	414160A	414180A	414200A
COD. 414/O	414040O	414060O	414080O	414100O	414120O	414140O	414160O	414180O	414200O
N° Pcs	24	24	24	24	24	24	12	12	12
Kg.	0,600	0,900	1,800	3,000	4,500	5,800	4,800	6,500	7,200

Cerniera con costa da saldare con finale rotondo

Art. 414/AT-414/OT

Paumelles à souder final ronds
Round top hinges to weld
Pernios perfil lagrima final redondo



- Art. 414/AT** con perno ferro e ranella ottone
pivot acier bague laiton
steel pin and brass ring
pernio hierro + arandela laton

- Art. 414/OT** con perno ottone e ranella ottone
pivot laiton et bague laiton
brass pin and brass ring
pernio + arandela laton

A mm	40	60	80	100	120	140	160	180	200
Ø mm	10	10	12	14	16	16	20	22	22
B mm	12	12	14	16	18	18	23	25	25
D mm	6	6	7	8	9	9	12	14	14
COD. 414/AT	414040AT	414060AT	414080AT	414100AT	414120AT	414140AT	414160AT	414180AT	414200AT
COD. 414/OT	414040OT	414060OT	414080OT	414100OT	414120OT	414140OT	414160OT	414180OT	414200OT
N° Pcs	24	24	24	24	24	24	24	12	12
Kg.	0,600	0,900	1,700	2,900	4,700	5,330	10,500	6,500	7,500

Cerniere a goccia giganti per porte blindate

Art. 415-415/A-415/OC

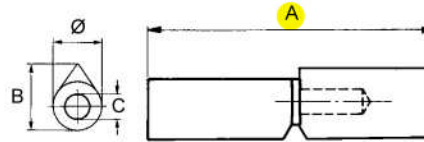
Paumelles pour portes lourdes
Heavy duty drop profile hinges for heavy doors
Pernios perfil lagrima por puertas acorazadas



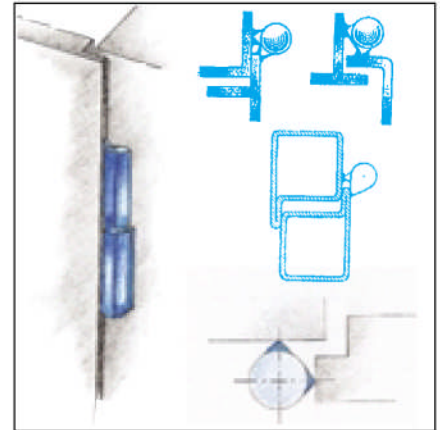
Art. 415
con perno in ottone e
ranella in ottone
pivot laiton + bague laiton
brass pin + brass ring
Pernio + arandela laton

Art. 415/A
con perno in ferro
e cuscinetto a sfere
pivot acier + roulement a billes
steel pin + ball bearing
pernio hierro+rodamiento de bolas

Art. 415/OC
con perno in ottone
e cuscinetto a sfere
pivot laiton + roulement a billes
brass pin + ball bearing
Pernio laton+rodamiento de bolas



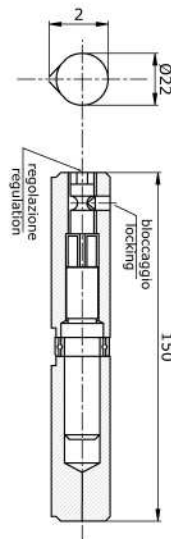
A mm	150	140
Ø mm	22	18
B mm	25	20
C mm	14	10
COD. 415	415	415018140
COD. 415/A	415A	415018140A
COD. 415/OC	415OC	415018140OC
N° Pcs	12	20
Kg.	5,500	5,000



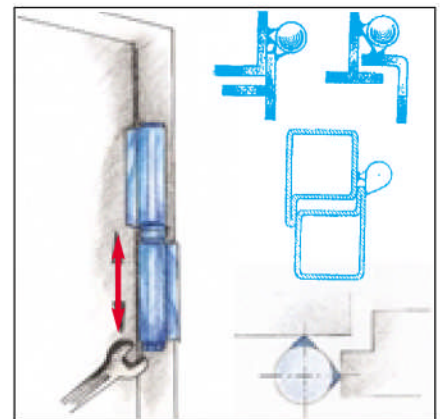
Art. 415/R

Cerniere a goccia giganti regolabili

Paumelles type géant avec regulation
Heavy duty hinges with regulating pivot
Pernios gigante regulable



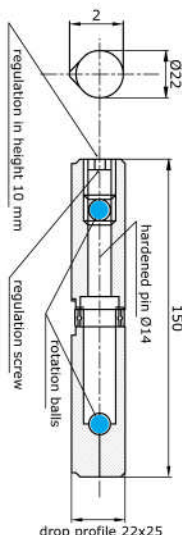
Art.	415/R
CODICE ART.	415R
N° Pcs	12
Kg.	5,100



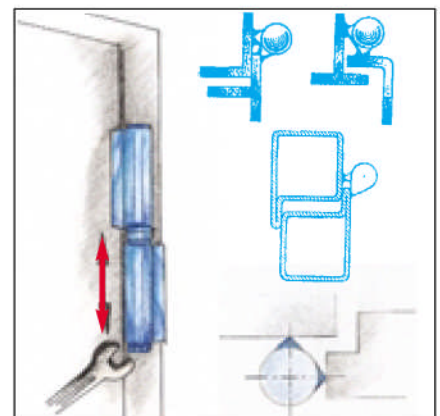
Art. 415/RD

Cerniera per porte blindate regolabile su sfere

paumelle réglable pour portes blindées-rotation sur billes
regulating hinge for armoured doors-rotation on balls
Pernios por puertas acorazadas regulable con bolas



Art.	415/RD
CODICE ART.	415RD
N° Pcs	24
Kg.	5,100

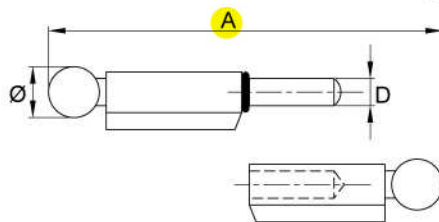


Cerniera da saldare in stile ferro battuto

Art. 860



Paumelles à souder style fer forgé
Welding hinges wrought iron style
Pernios forjados



Art. 860

Con perno ferro e ranella ottone
Pivot acier + bague laiton
Steel pin + brass ring
Perno hierro / arandela laton

Art. 860/C

Con cuscinetto a sfera
Avec roulement à billes
With ball bearings
Con rodamiento de bolas

A mm	105	125	150
Ø mm	21	25	30
D mm	12	14	16
cod. 860	860105	860125	860150
cod. 860/C	860105C	860125C	860150C
N° Pcs	10	10	8
Kg.	2,300	3,630	5,670

Cerniere per cancelli a 2 ali aperte perno sfilabile

Art. 403/A-404/A

Charnieres lourdes pour portail 2 volets ouverts pivot degondable
Heavy duty hinges for gate 2 wings removable pin
Pernios fuertes 2 palas abiertas eje deslizable

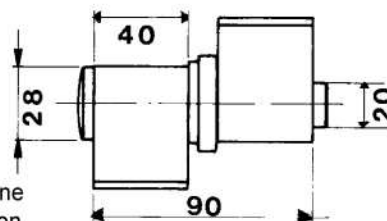


Art. 403/A

con ranella ottone
avec bague laiton
with brass washer
Con arandela laton

Art. 404/A

con cuscinetto a sfera
avec roulement à billes
with ball bearings
Con rodamiento de bolas



Art.	403/A	404/A
CODICE ART.	403A	404A
N° Pcs	8	8
Kg.	4,150	4,200



Cerniere per cancelli a 2 ali chiuse perno sfilabile

Art. 403/C-404/C

Charnieres lourdes pour portail 2 volets fermés pivot degondable
Heavy duty hinges for gate 2 closed wings removable pin
Pernios fuertes 2 palas cerradas eje deslizable

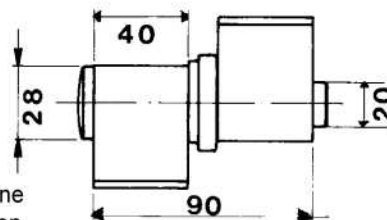


Art. 403/C

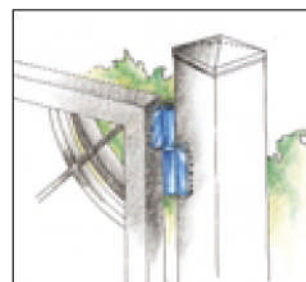
con ranella ottone
avec bague laiton
with brass washer
Con arandela laton

Art. 404/C

con cuscinetto a sfera
avec roulement à billes
with ball bearings
Con rodamiento de bolas



Art.	403/C	404/C
CODICE ART.	403C	404C
N° Pcs	6	12
Kg.	6,360	6,400



Art. 403/LA-404/LA



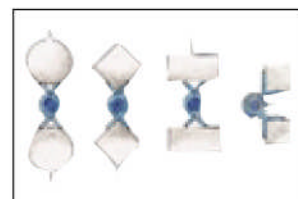
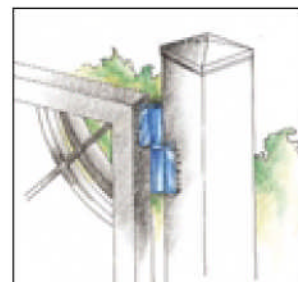
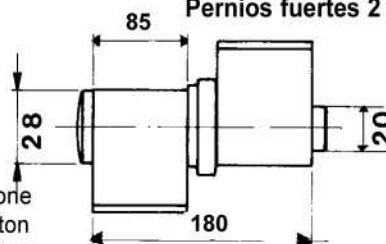
Art. 403/LA
con ranella ottone
avec bague laiton
with brass washer
Con arandela laton

Art. 404/LA
con cuscinetto a sfere
avec roulement a billes
with ball bearings
Con rodamiento de bolas

Art.	403/LA	404/LA
CODICE ART.	403LA	404LA
N° Pcs	4	4
Kg.	4,240	4,260

Cerniere per cancelli a 2 ali aperte lunghe perno sfilabile

Charnieres lourdes pour portail 2 volets ouverts longue pivot degondable
Heavy duty hinges for gate 2 open wings long removable pin
Pernios fuertes 2 palas abiertas eje deslizable



Art. 403/LC-404/LC

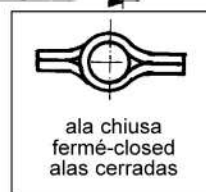
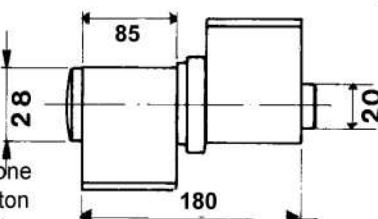


Art. 403/LA
con ranella ottone
avec bague laiton
with brass washer
Con arandela laton

Art. 404/LA
con cuscinetto a sfere
avec roulement a billes
with ball bearings
Con rodamiento de bolas

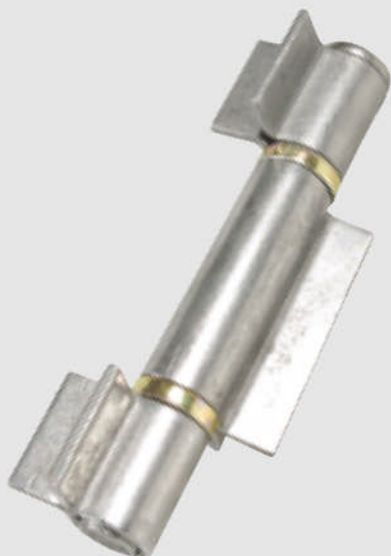
Cerniere per cancelli a 2 ali chiuse lunghe perno sfilabile

Charnieres lourdes pour portail 2 volets fermés longue pivot degondable
Heavy duty hinges for gate 2 closed wings long removable pin
Pernios fuertes 2 palas cerradas eje deslizable



Art.	403/LC	404/LC
CODICE ART.	403LC	404LC
N° Pcs	12	6
Kg.	6,400	6,300

Art. 405/A-406/A

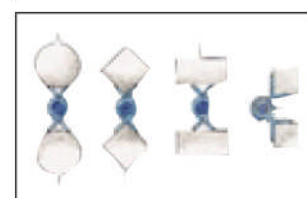
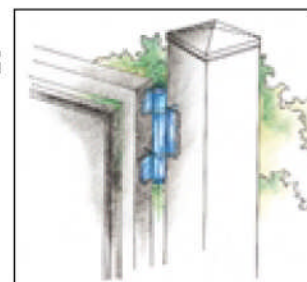
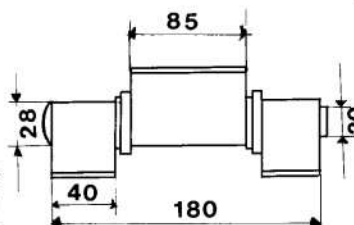


Art. 405/A
con ranella ottone
avec bague laiton
with brass washer
Con arandela laton

Art. 406/A
con cuscinetto a sfere
avec roulement a billes
with ball bearings
Con rodamiento de bolas

Cerniere per cancelli a 3 ali aperte perno sfilabile

Charnieres lourdes pour portail 3 volets ouverts pivot degondable
Heavy duty hinges for gate 3 open wings removable pin
Pernios fuertes 3 palas abiertas eje deslizable



Art.	405/A	406/A
CODICE ART.	405A	406A
N° Pcs	4	4
Kg.	4,220	4,220

Art. 405/C-406/C



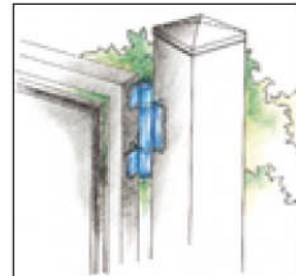
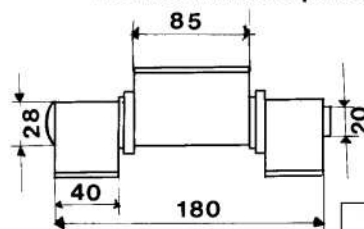
Art. 405/C

con ranella ottone
avec bague laiton
with brass washer
Con arandela laton

Art. 406/C

con cuscinetto a sfere
avec roulement a billes
with ball bearings
Con rodamiento de bolas

Art.	405/C	406/C
CODICE ART.	405C	406C
N° Pcs	6	6
Kg.	6,350	6,250



Cerniere per cancelli a 4 ali aperte perno sfilabile

Art. 407/A-408/A



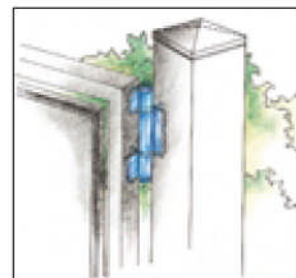
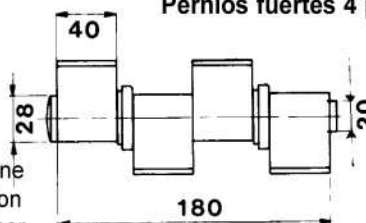
Art. 407/A

con ranella ottone
avec bague laiton
with brass washer
Con arandela laton

Art. 408/A

con cuscinetto a sfere
avec roulement a billes
with ball bearings
Con rodamiento de bolas

Art.	407/A	408/A
CODICE ART.	407A	408A
N° Pcs	4	4
Kg.	6,250	6,200



Cerniere per cancelli a 4 ali chiuse perno sfilabile

Art. 407/C-408/C

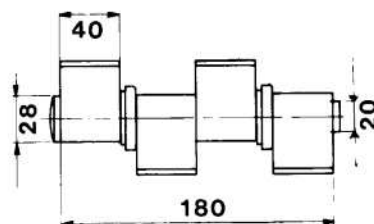


Art. 407/C

con ranella ottone
avec bague laiton
with brass washer
Con arandela laton

Art. 408/C

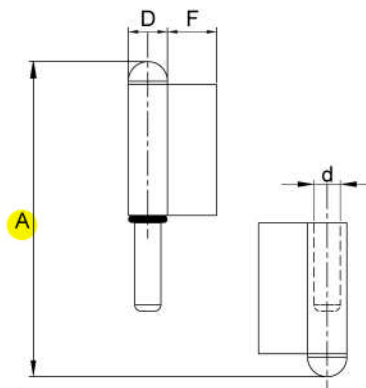
con cuscinetto a sfere
avec roulement a billes
with ball bearings
Con rodamiento de bolas



Art.	407	408
CODICE ART.	407C	408C
N° Pcs	6	4
Kg.	6,250	6,200

Cerniera tipo FICHES da saldare ala media

Art. 495



Paumelles a souder pivot fixe
Hinges to weld fixed pin
Pernios a soldar 2 piezas

A mm	60	80	100	120	140	160
F mm	18	18	33	33	36	36
D mm	14	14	17	17	20	20
d mm	8,2	8,2	10,2	10,2	12,2	12,2
CODICE ART.	495060	495080	495100	495120	495140	495160
N° Pcs	20	20	16	16	16	16
Kg.	2,150	2,850	4,160	4,900	7,950	8,850

In acciaio naturale
Acier naturel
Natural steel finish
hierro natural

Destre o sinistre
Droites ou gauches
Right or left
man derecha o izquierda

Cerniera tipo FICHES da saldare 3 ali perno sfilabile

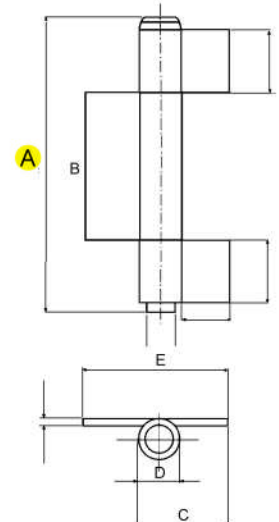
Art. 496



In acciaio naturale
Acier naturel
Natural steel
hierro natural

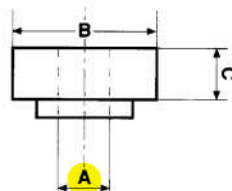
A mm	110	140	170	200
E mm	105	95	110	115
ØD mm	15	18	20	22
B mm	50	70	80	100
C mm	60	56	65	69
CODICE ART.	496110	496140	496170	496200
N° Pcs	10	10	10	10
Kg.	2,700	4,000	6,400	7,500

Paumelles à souder 3 volet - pivot sortant
Hinges to weld 3 wings - removable pin
Pernios a soldar 3 piezas eje deslizante



Cuscinetti a sfera reggispinta per cerniere

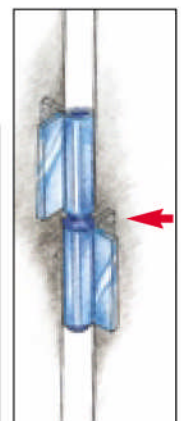
Art. 413



in acciaio cementato / ottonato (O)
acier trempé / laitonné (O)
hardened steel / brass plated (O)
hierro templado / latonado (O)

A mm	9	10	11	12	13	14	18	20
B mm	15	18	19	20	22	22	26	28
C mm	6	6	6,5	6,5	7	7	7,5	7
Per Art.	414/A 120/140	401 120	401 140	401 170 414/A 160	-	401 200 414/A 180/200	-	DA 403 A 408
CODICE ART.	413009	413010	413011	413012	413013	413014	413018	413020
COD. ART. (O)	4130090	4130100	4130110	4130120	4130130	4130140	4130180	4130200
N° Pcs	100	100	100	100	100	100	50	50
Kg.	0,420	0,550	0,740	0,800	0,850	0,900	1,00	1,120

Roulement a billes pour paumelles
Ball bearings for hinges
Rodamiento de bolas para pernios



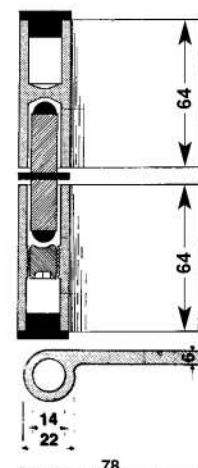
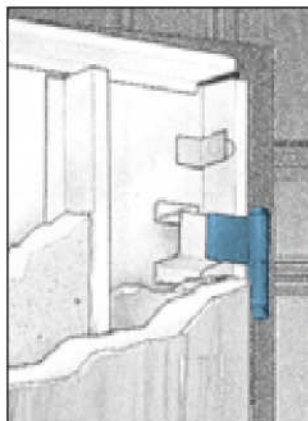
Art. 417/R



DESTRE E SINISTRE
DROITES ET GAUCHES
RIGHT AND LEFT
MAN DERECHA O
IZQUIERDA

in acciaio lucido
acier naturel
natural steel
hierro natural

Art.	417/R
CODICE ART.	417R
N° Pcs	1
Kg.	0,900



Cerniere per porte blindate regolabili

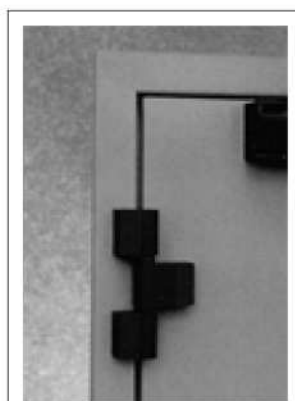
Charnières pour portes blindées réglables
Hinges for security doors with regulation
Pernio de pala regulable por puertas acorazadas

Art. 543-543/M

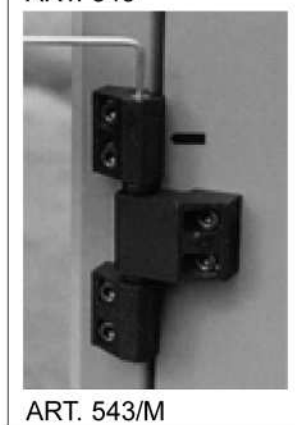


Cerniere per porte pesanti e tagliafuoco tipo rotondo

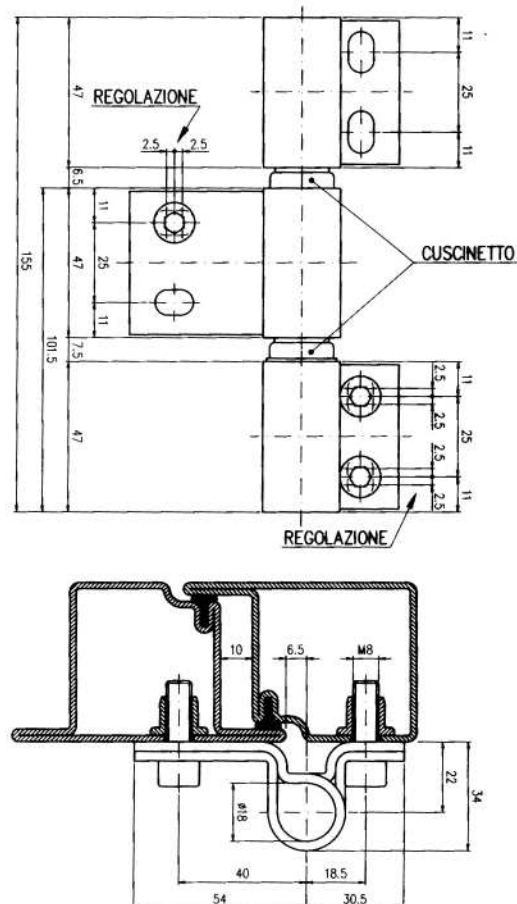
Charniere pour portes lourdes et coupe feu model rond
Special hinge for heavy doors and fire doors round model
Pernios para puertas corta fuego



ART. 543



ART. 543/M



Art.	543	543/M
CODICE ART.	543	543M
N° Pcs	2	2
Kg.	2,060	2,100

Art. 543

a 3 ali (portata 2 cerniere Kg. 150)
3 volets (force 2 charnières Kg. 150)
3 wings (max door weight Kg. 150)
3 piezas (fuerza 2 pernios Kg. 150)

Art. 543/M

a 3 ali con molla di chiusura
3 volets avec ressort pour fermeture
3 wings with self closing spring
3 piezas con muelles

Art. 442-443-443/M
942-943

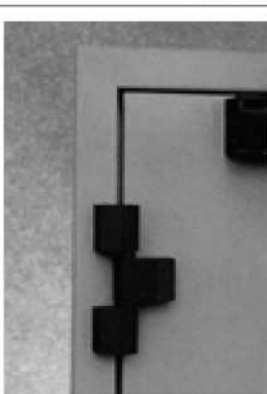
Charniere pour portes lourdes et coupe feu avec roulement a billes
Special hinge for heavy doors and fire doors with ball bearing
Pernios para puertas corta fuego con rodamiento de bolas



ART. 442



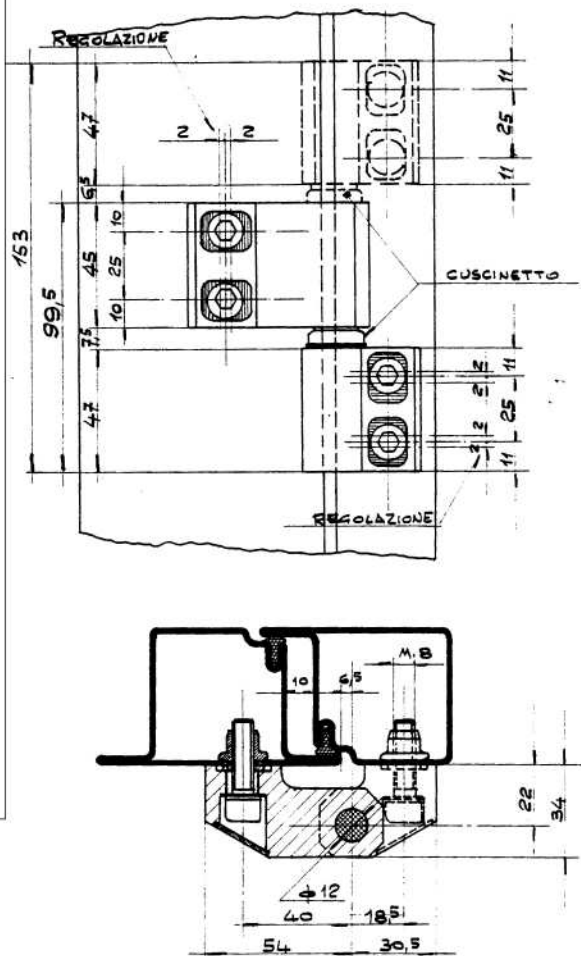
ART. 443



ART. 443



ART. 443/M



Art. 442

a due ali (portata 2 cerniere kg.80)
2 volets (force 2 charnières kg.80)
2 wings (max door weight kg.80)
2 piezas (fuerza 2 pernios Kg. 80)

Art. 942

a 2 ali INOX
2 volets INOX
2 wings INOX
2 piezas INOX

Art. 443

a tre ali (portata 2 cerniere kg.150)
3 volets (force 2 charnières kg.150)
3 wings (max door weight kg.150)
3 piezas (fuerza 2 pernios Kg. 150)

Art. 943

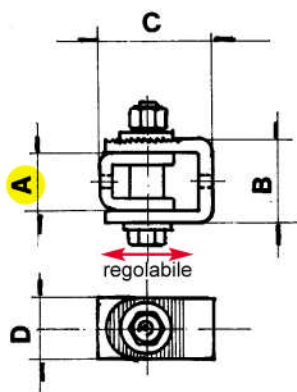
a 3 ali INOX
3 volets INOX
3 wings INOX
3 piezas INOX

Art. 443/M

a 3 ali con molla di chiusura
3 volets avec ressort pour fermeture
3 wings with self closing spring
3 piezas con muelles

Art.	442	443	443/M	942	943
CODICE ART.	442	443	443M	942	943
N° Pcs	2	2	2	2	2
Kg.	1,700	2,100	2,000	1,700	2,100

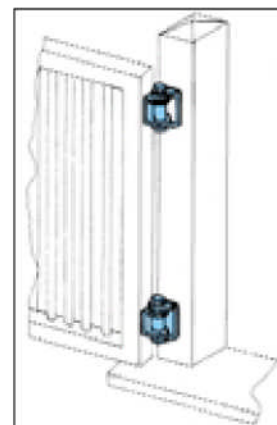
Art. 423



in acciaio zincato
acier galvanizé
galvanized steel
hierro cingado

Cerniera regolabile

Charnière réglable
Regulating hinge
Bisagra regulable



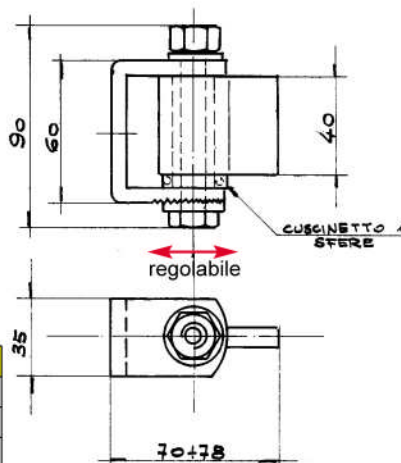
Art.	423/G	423/P
TIPO-MODEL	GRANDE BIG	PICCOLO SMALL
A mm	45	30
B mm	60	45
C mm	64+70	64+70
D mm	35	30
CODICE ART.	423G	423P
N° Pcs	5	10
Kg.	2,850	4,100

Art. 424



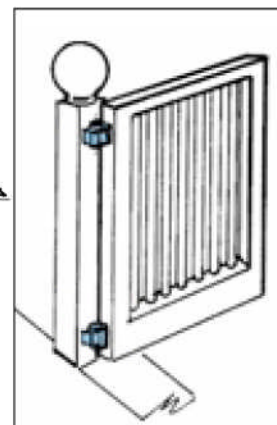
Cerniera regolabile con snodo e cuscinetto

Charnière réglable avec roulement à billes
Regulating hinge with ball bearing
Bisagra regulable con rodamiento



in acciaio zincato
acier galvanizé
galvanized steel
hierro cingado

Art.	424
CODICE ART.	424
N° Pcs	5
Kg.	2,820



Art. 523

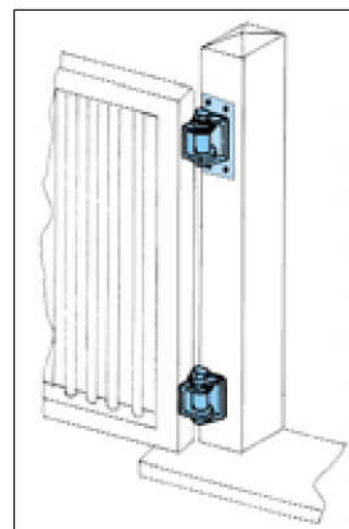


Cerniera regolabile da avvitare

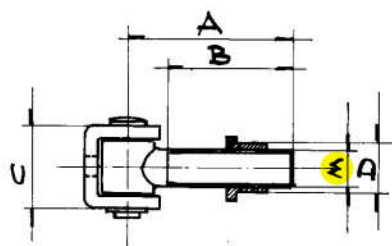
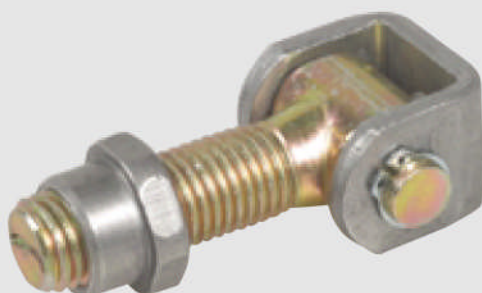
Charnière réglable a visser
Regulating hinge to screw
Bisagra regulable por atornillar

in acciaio zincato
acier galvanizé
galvanized steel
hierro cingado

Art.	523
CODICE ART.	523
N° Pcs	10
Kg.	10,000



Art. 425

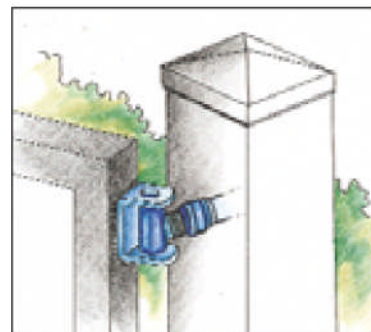


M mm	18	20	22	24
A mm	58	80	68	72
B mm	38	60	45	50
C mm	35	40	41	48
D mm	23	25	27	30
CODICE ART.	425018	425020	425022	425024
N° Pcs	10	10	10	5
Kg.	3,060	4,300	5,500	3,350

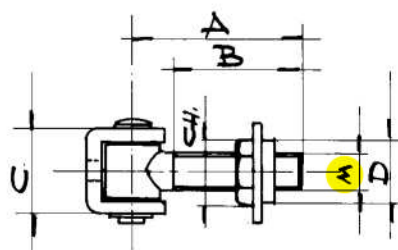
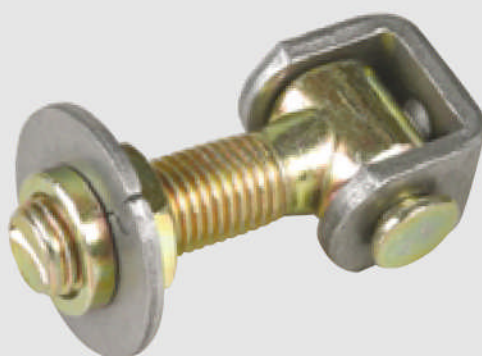
Cardine regolabile per cancello

Pivot réglable pour portails
Regulating hinge for gates
Cardan regulable por cancelas

in acciaio tropicalizzato
en acier bichromaté
yellow galvanized steel
hierro bicromatado



Art. 425/R

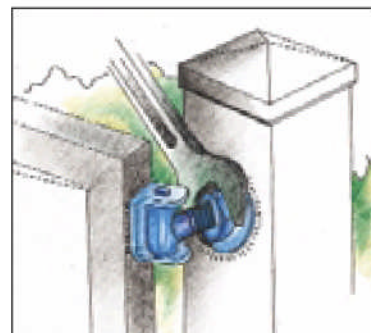


M mm	18	20	22	24
A mm	58	80	68	72
B mm	38	60	45	50
C mm	35	40	41	48
D mm	30	30	32	36
CH mm	30	30	32	36
CODICE ART.	425018R	425020R	425022R	425024R
N° Pcs	10	10	10	5
Kg.	3,850	4,830	5,980	3,750

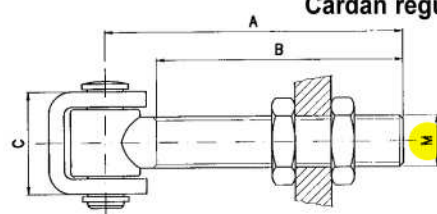
Cardine regolabile con ranella e dado

Pivot réglable avec écrou et bague
Regulating hinge for gates
Cardan regulable con arandela

in acciaio tropicalizzato
en acier bichromaté
yellow galvanized steel
hierro bicromatado



Art. 425/L

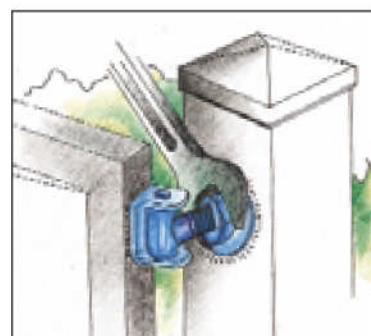


in acciaio zincato
acier galvanizé
galvanized steel
hierro cingado

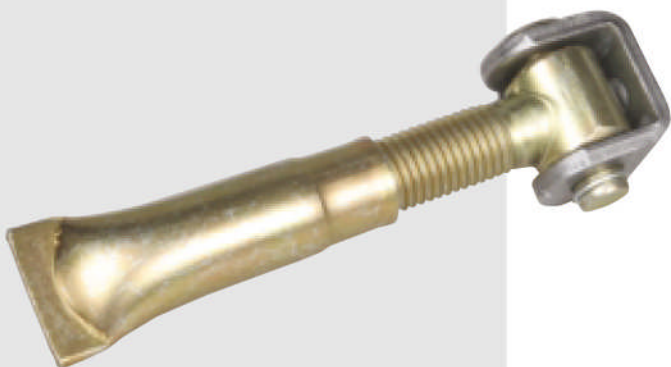
M mm	20	24
A mm	165	170
B mm	140	145
C mm	40	48
CODICE ART.	425020L	425024L
N° Pcs	5	5
Kg.	3,190	4,840

Cardine regolabile tipo lungo

Charniere réglable type long
Regulating hinge long type
Cardan regulable modelo largo



Art. 425/M

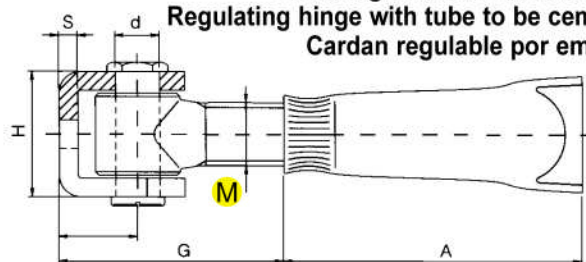


Cardine regolabile con tubo a murare

Gond réglable avec tube à sceller

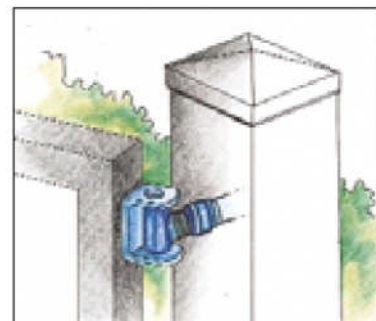
Regulating hinge with tube to be cemented

Cardan regulable por empotrar

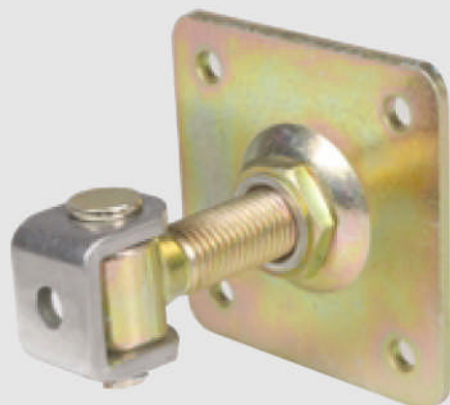


In acciaio tropicalizzato
En acier bichromaté
Yellow galvanized steel
hierro bicromatado

M mm	20	24
A mm	95	100
CODICE ART.	425020M	425024M
N° Pcs	10	10
Kg.	5,100	7,500



Art. 425/P



Cardine regolabile con piastra da avvitare

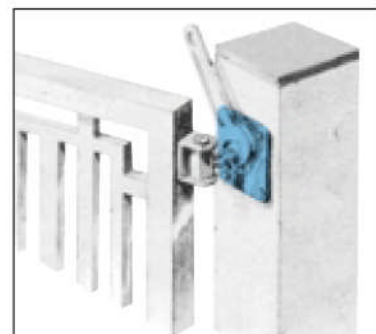
Gond réglable avec plaque à visser

Regulating hinge with screwing plate

Cardan regulable con placa por atornillar

In acciaio tropicalizzato
En acier bichromaté
Yellow galvanized steel
hierro bicromatado

M mm	20	24
CODICE ART.	425020P	425024P
N° Pcs	5	5
Kg.	4,100	6,500



Art. 425/O

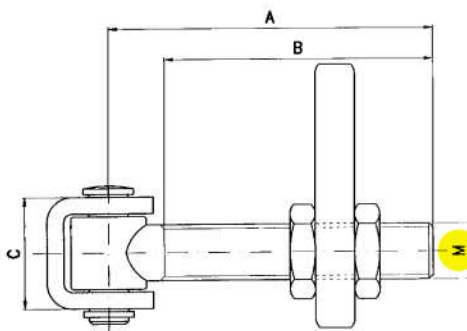


Cardine con regolazione ortogonale apertura 180°

Gond réglable pour ouverture 180°

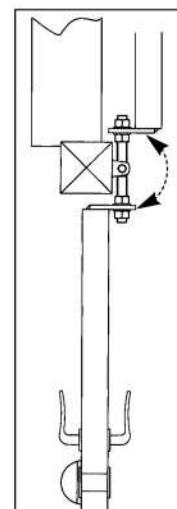
Regulating hinge for opening 180°

Cardan regulable por abrir 180°



In acciaio zincato
Acier galvanisé
Galvanized steel
hierro cingado

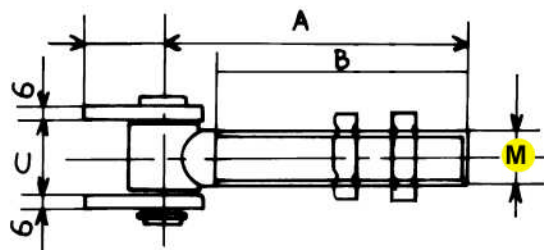
M mm	12	16	18	20	22	24	27
A mm	105	110	110	165	120	170	150
B mm	85	90	85	140	90	145	120
C mm	27	30	40	40	45	48	62
CODICE ART.	425012O	425016O	425018O	425020O	425022O	425024O	425027O
N° Pcs	10	10	6	10	5	5	5
Kg.		4,000	4,130		6,000		



Cardine regolabile a saldare per cancelli

Art. 525

Charnieres réglables à souder pour portails
Regulating hinges to weld for gates
Cardan regulable a soldar para cancelas



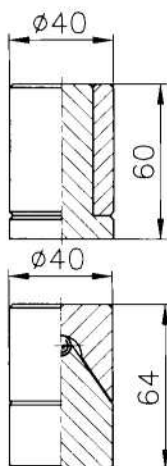
M mm	12	16
A mm	105	130
B mm	85	100
C mm	15	32
CODICE ART.	525012	525016
N° Pcs	10	10
Kg.	2,500	3,670

In acciaio zincato
Acier galvanisé
Galvanized steel
hierro cingado

Art. 440

Cardine a sfera superiore e inferiore

Gond avec sphere inferieur et superieur
Ball hinge upper + lower
Cardan con bola



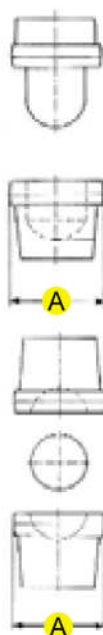
in acciaio zincato
acier galvanisé
galvanized steel
hierro cingado

Art.	440
CODICE ART.	440
N° Pcs	5 pr.
Kg.	6,100

Art. 441

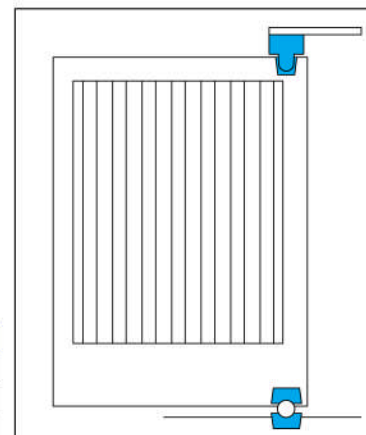
Cardine superiore e inferiore a sfera per cancelli

Pivot de portail avec boule
Gate hinge with ball
Cardan con bola



in acciaio naturale
acier naturel
natural steel
hierro natural

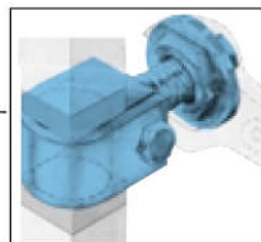
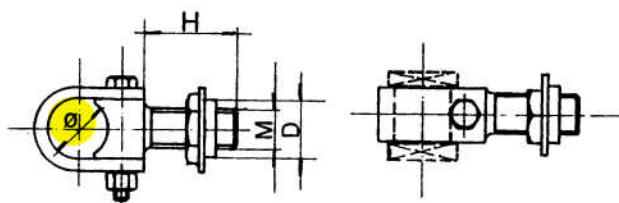
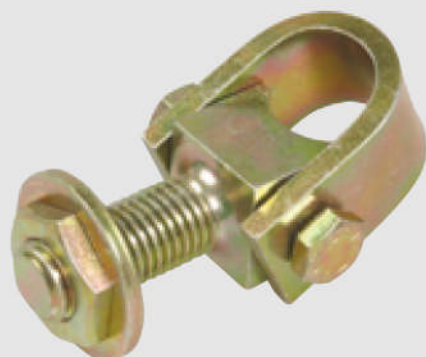
A mm	40	50
CODICE ART.	441040	441050
N° Pcs	4	4
Kg.	4,450	6,790



Art. 428

Cerniera regolabile per cancelli

Pivot réglable pour portails
Regulating hinge for gates
Bisagra regulable para cancelas



in acciaio tropicalizzato
en acier bichromaté
yellow galvanized steel
hierro bicromatado

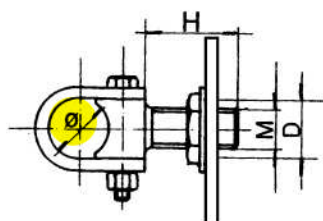
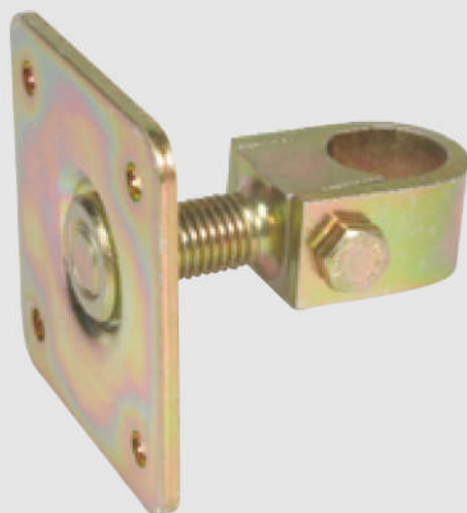
Ø mm	30	35	40
H mm	48	55	70
M mm	20	24	30
D mm	48	55	70
CODICE ART.	428030	428035	428040
N° Pcs	1	1	1
Kg.	0,530	0,750	1,320



Cerniera regolabile per cancelli con piastra da avvitare

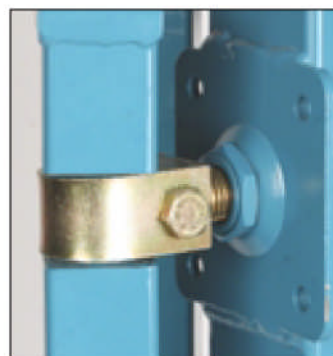
Pivot réglable pour portails avec plaque à visser
Regulating hinge for gates with plate to be screwed
Bisagra regulable para cancelas con placa por atornillar

Art. 428/P



in acciaio tropicalizzato
en acier bichromaté
yellow galvanized steel
hierro bicromatado

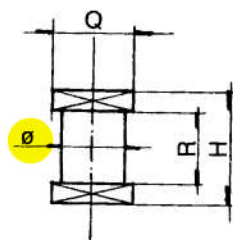
Ø mm	30	35
H mm	48	55
M mm	20	24
D mm	48	55
CODICE ART.	428030P	428035P
N° Pcs	10	10
Kg.	4,500	6,500



Art. 428/T

Tronchetto per Art. 428

Tronçon pour Art. 428
Log for Art. 428
Pernio para bisagra art. 428



in acciaio tropicalizzato
en acier bichromaté
yellow galvanized steel
hierro bicromatado

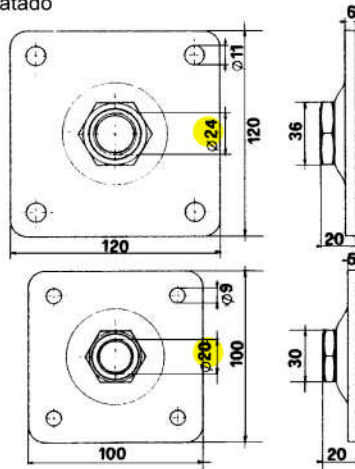
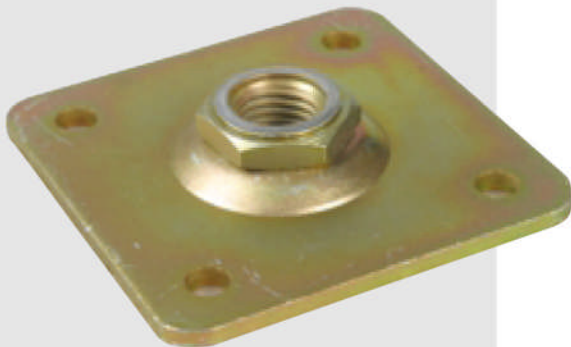
Ø mm	30	35	40
H mm	52	57	62
R mm	32	37	42
Q mm	35	40	50
CODICE ART.	428030T	428035T	428040T
N° Pcs	1	1	1
Kg.	0,340	0,520	0,790

Piastra da avvitare per cardini regolabili

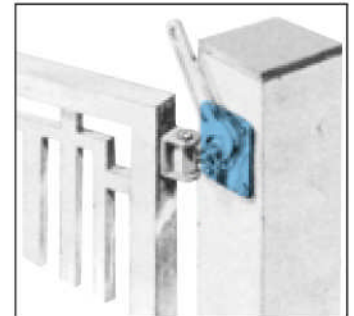
Art. 480

Plaque à visser pour pivot réglables
Plate to screw for regulating hinges
Placa por atornillar para bisagras regulables

in acciaio tropicalizzato
en acier bichromaté
yellow galvanized steel
hierro bicromatado



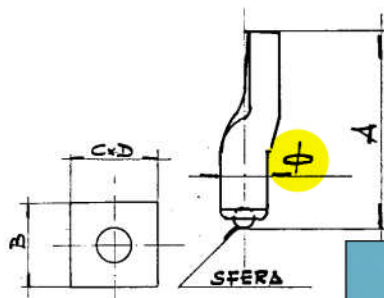
Ø mm	20	24
CODICE ART.	480020	480024
N° Pcs	1	1
Kg.	0,420	0,630



Art. 425/A

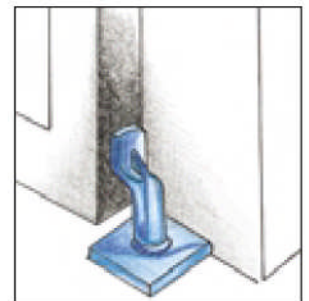
Perno e piastra inferiori per cancello

Pivot et plaque inférieur pour portails
Bottom pivot for gates
Pernio y placa base inferior para cancela



in acciaio tropicalizzato
en acier bichromaté
yellow galvanized steel
hierro bicromatado

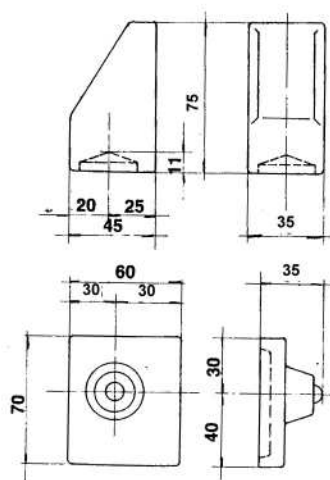
Ø mm	20	24
A mm	89	96
B mm	63	60
CxD mm	60x15	60x20
CODICE ART.	425020A	425024A
N° Pcs	10	6
Kg.	6,710	5,550



Art. 423/A

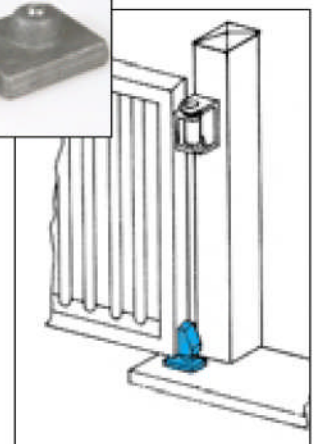
Piletta a sfera con piastra per cardine

Pivot et plaque inférieur avec sphere pour portail
bottom pivot with sphere for gates
Pivote y base con bola para cancelas



ferro naturale
acier naturel
natural steel
hierro natural

Art.	423/A
CODICE ART.	423A
N° Pcs	6
Kg.	4,750



Art. 520

New

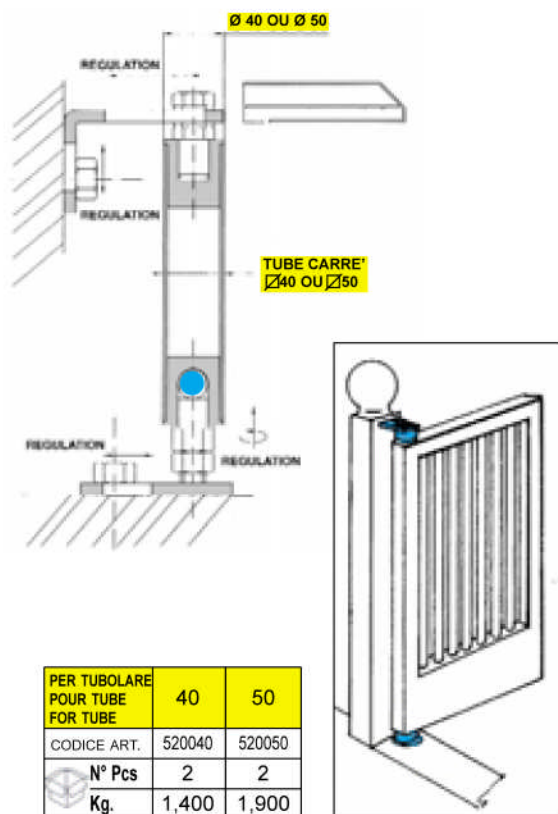


Acciaio zincato
Acier galvanizé
Galvanized steel
hierro cingado



Cardine su sfera regolabile 3D avvitare

Pivot sur bille réglable 3D à visser
Regulating 3D hinge on ball to be screwed
Punto de giro con bola regulable 3D por atomillar



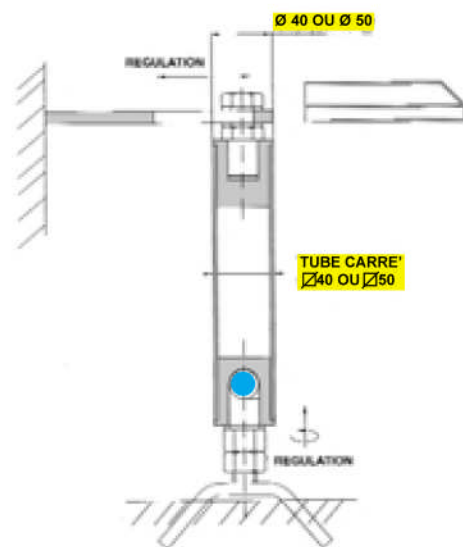
Art. 521

New



Cardine su sfera regolabile a murare

Pivot sur bille réglable à sceller
regulating hinge on ball to be cemented
Punto de giro con bola regulable por empotrar



Acciaio zincato
Acier galvanizé
Galvanized steel
hierro cingado

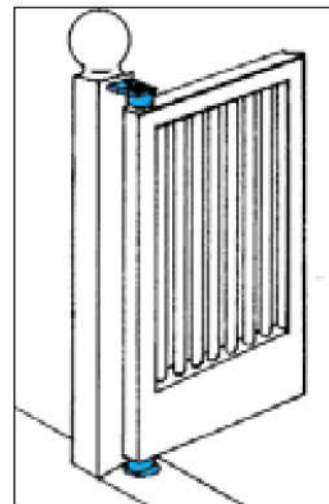
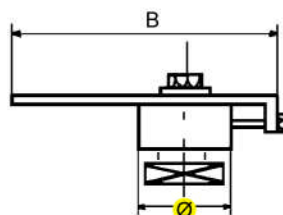
PER TUBOLARE POUR TUBE FOR TUBE	40	50
CODICE ART.	521040	521050
N° Pcs	2	2
Kg.	1,750	2,150

Cardine a cuscinetti con regolazione a vite - Ø 50

Art. 538-539

Pivot avec roulements à billes réglage à vis - Ø 50
Ball bearing hinge for gates regulation through screw - Ø 50
Punto de giro con rodamiento de bolas regulable con tornillo - Ø 50

Art. 538



In acciaio tropicalizzato
Acier bichromaté
Yellow galvanized steel
hierro bicromatado

Art.	538	539
Ø mm	50	
B mm	140	
CODICE ART.	538539	
N° Pcs	1+1	
Kg.	1,700	

Art. 539

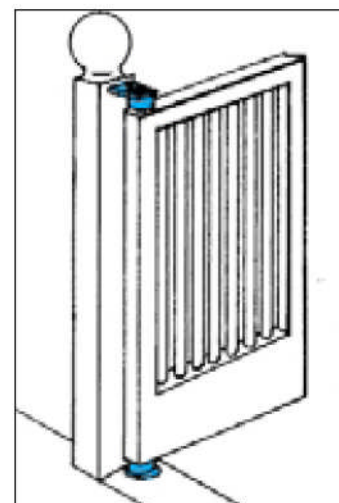
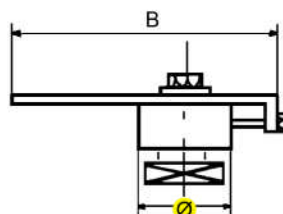


Art. 548-549

Cardine a cuscinetti con regolazione a vite - Ø 70

Pivot avec roulements à billes réglage à vis - Ø 70
Ball bearing hinge for gates regulation through screw - Ø 70
Punto de giro con rodamiento de bolas regulable con tornillo - Ø 70

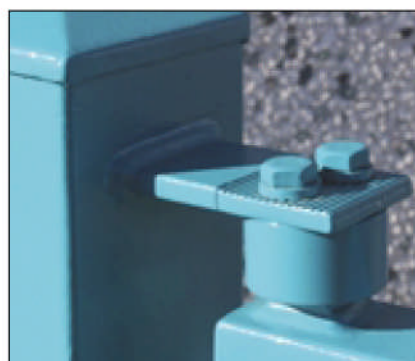
Art. 548



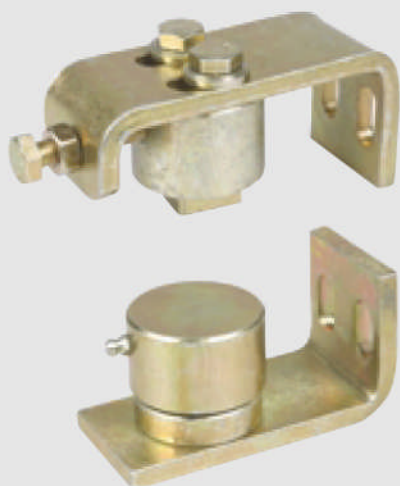
In acciaio tropicalizzato
Acier bichromaté
Yellow galvanized steel
hierro bicromatado

Art.	548	549
Ø mm	70	
B mm	150	
CODICE ART.	548549	
N° Pcs	1+1	
Kg.	2,000	

Art. 549



Art. 738-739

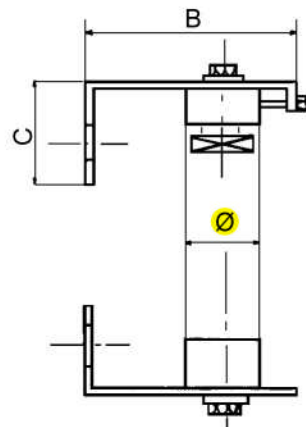
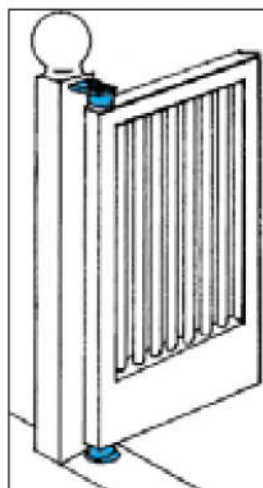


In acciaio tropicalizzato
Acier bichromaté
Yellow galvanized steel
hierro bicromatado

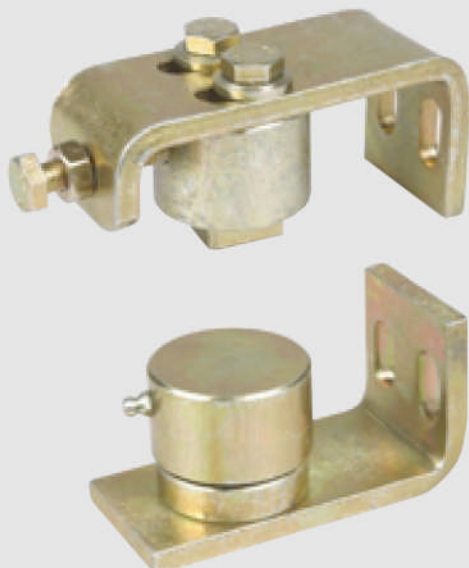
Art.	738	739
Ø mm	50	
B mm	115	
C mm	60	
CODICE ART.	738739	
N° Pcs	1+1	
Kg.	2,180	

Cardine a cuscinetti da avvitare Ø 50

Pivot avec roulements à billes à visser Ø 50
Ball bearing hinge for gates to be screwed Ø 50
Punto de giro con rodamiento de bolas por atornillar Ø 50



Art. 748-749

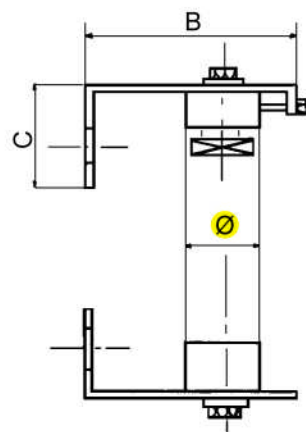


In acciaio tropicalizzato
Acier bichromaté
Yellow galvanized steel
hierro bicromatado

Art.	748	749
Ø mm	70	
B mm	140	
C mm	60	
CODICE ART.	748749	
N° Pcs	1+1	
Kg.	3,800	

Cardine a cuscinetti da avvitare Ø 70

Pivot avec roulements à billes à visser Ø 70
Ball bearing hinge to be screwed Ø 70
Punto de giro con rodamiento de bolas por atornillar Ø 70



Art. 438/P-439/P



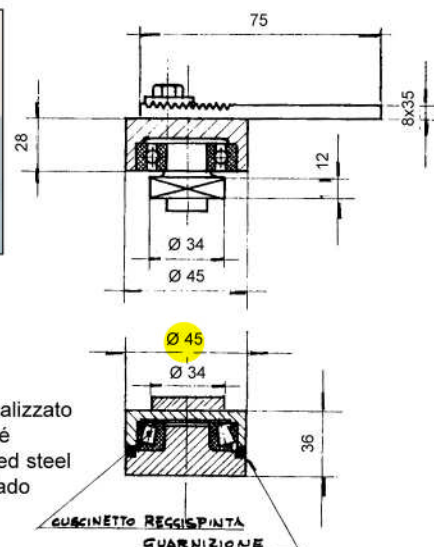
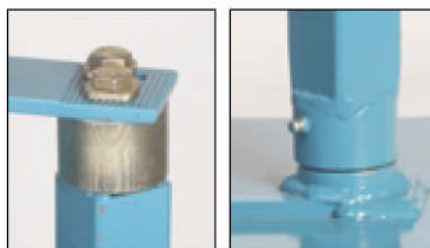
New

portata 1 coppia kg. 150
poids maximum portail kg. 150
maximum weight load kg. 150
fuerza 1 juego Kg. 150

Art.	438/P	439/P
CODICE ART.	438439P	
N° Pcs	1+1	
Kg.	1,020	

Cardine a cuscinetti per cancelletti Ø 45

Pivot sur roulements à billes Ø 45
Ball bearing hinges Ø 45
Punto de giro con rodamiento de bolas Ø 45



in acciaio tropicalizzato
acier bichromaté
yellow galvanized steel
hierro bicromatado

Cardine a cuscinetti per cancelli in ferro Ø 50

Art. 438-439

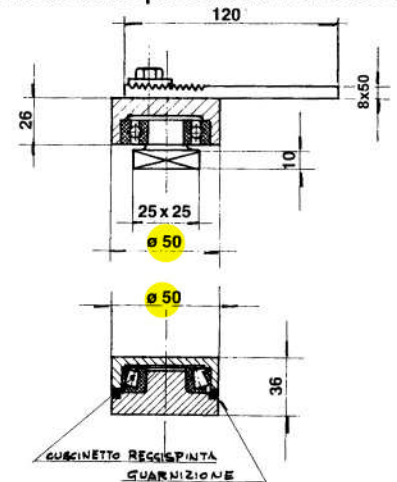


Art. 438-439
in acciaio tropicalizzato
acier bichromaté
yellow galvanized steel
hierro bicromatado

Art. 938-939
in acciaio inox
acier inox
stainless steel
acero inox

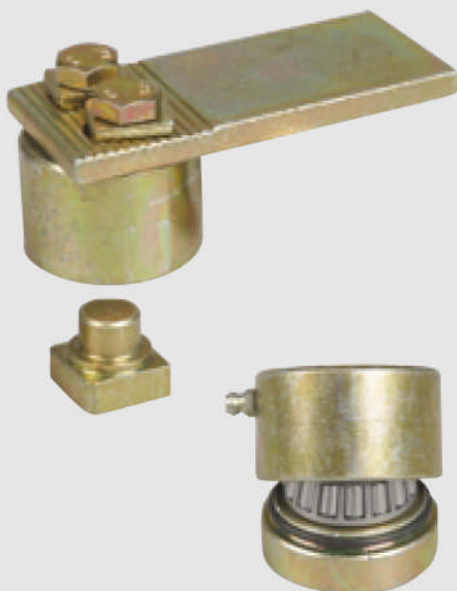
portata 1 coppia kg.500
poids maximum portail kg.500
maximum weight load kg.500
fuerza 1 juego Kg. 500

Art.	438	439	938	939
CODICE ART.	438439		938939	
N° Pcs	1+1		1+1	
Kg.	1,490		1,490	



Cardine a cuscinetti per cancelli in ferro Ø 70

Art. 448-449

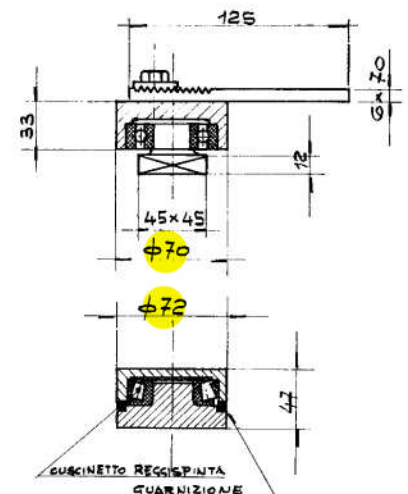


Art. 448-449
in acciaio tropicalizzato
acier bichromaté
yellow galvanized steel
hierro bicromatado

Art. 948-949
in acciaio inox
acier inox
stainless steel
acero inox

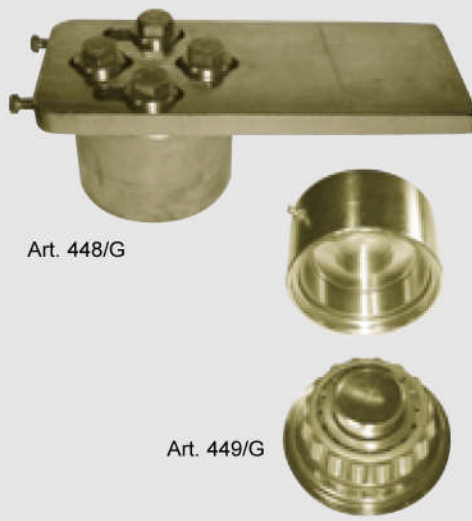
portata 1 coppia kg.1.000
poids maximum portail kg.1.000
maximum weight load kg.1.000
fuerza 1 juego Kg. 1.000

Art.	448	449	948	949
CODICE ART.	448449		948949	
N° Pcs	1+1		1+1	
Kg.	3,200		3,200	



Cardine a cuscinetti per cancelli pesanti Ø 120

Art. 448/G-449/G



Art. 448/G

Art. 449/G

New

in acciaio tropicalizzato
acier bichromaté
yellow galvanized steel
hierro bicromatado

portata 1 coppia kg. 1200
poids maximum portail kg. 1200
maximum weight load kg. 1200
fuerza 1 juego Kg. 1.200

Art.	448/G	449/G
CODICE ART.	448449G	
N° Pcs	1+1	
Kg.	20,000	

Pivot avec roulements à billes pour portail lourde Ø 120
Ball bearing hinges for heavy gates Ø 120
Punto de giro con rodamiento de bolas por cancela grande Ø 120

